

# FACTBOOK 2010

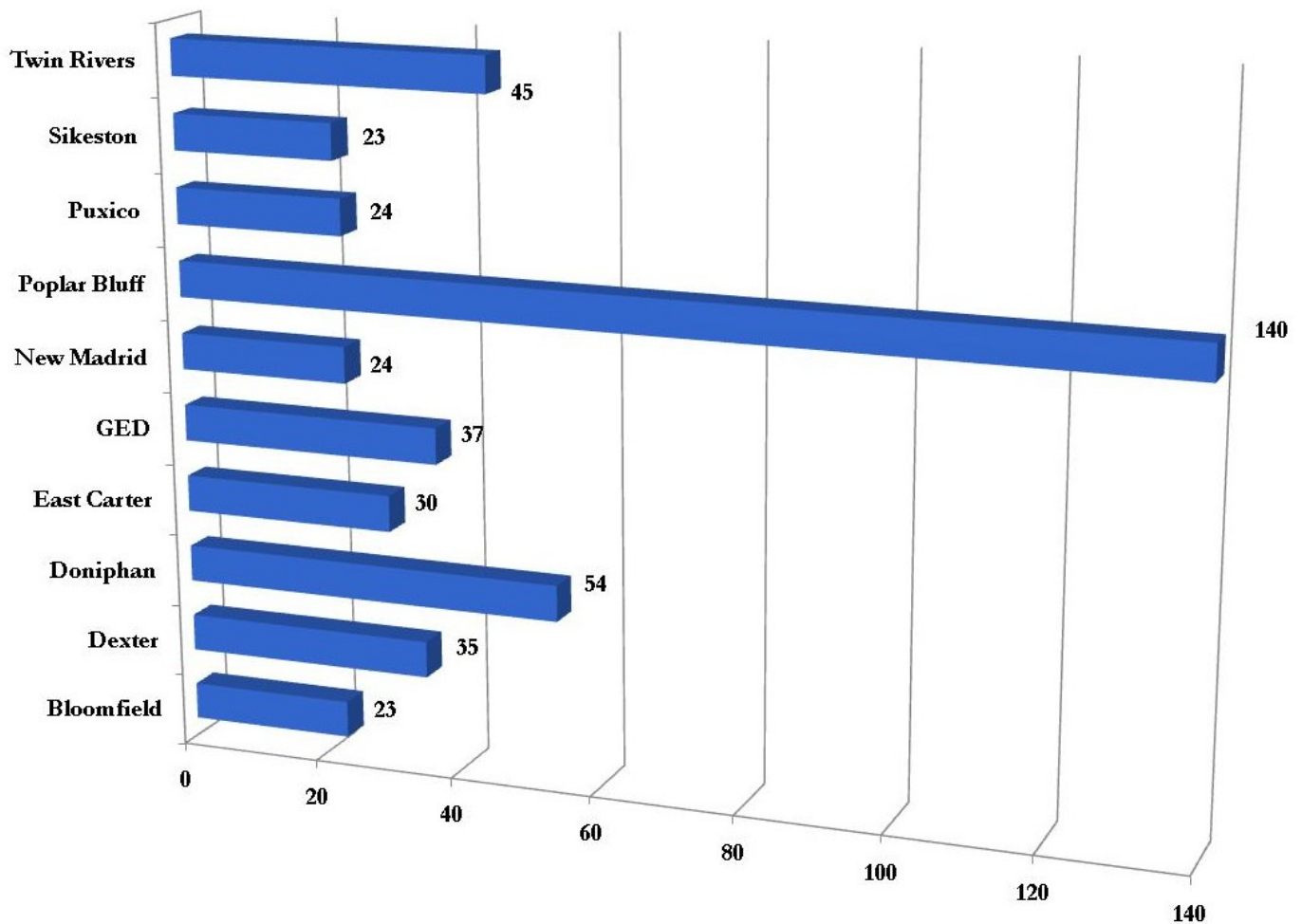
## Three Rivers College

THE COMMUNITY COLLEGE OF SOUTHEAST MISSOURI

# Recent High School Graduates by School

## Top 10 High Schools

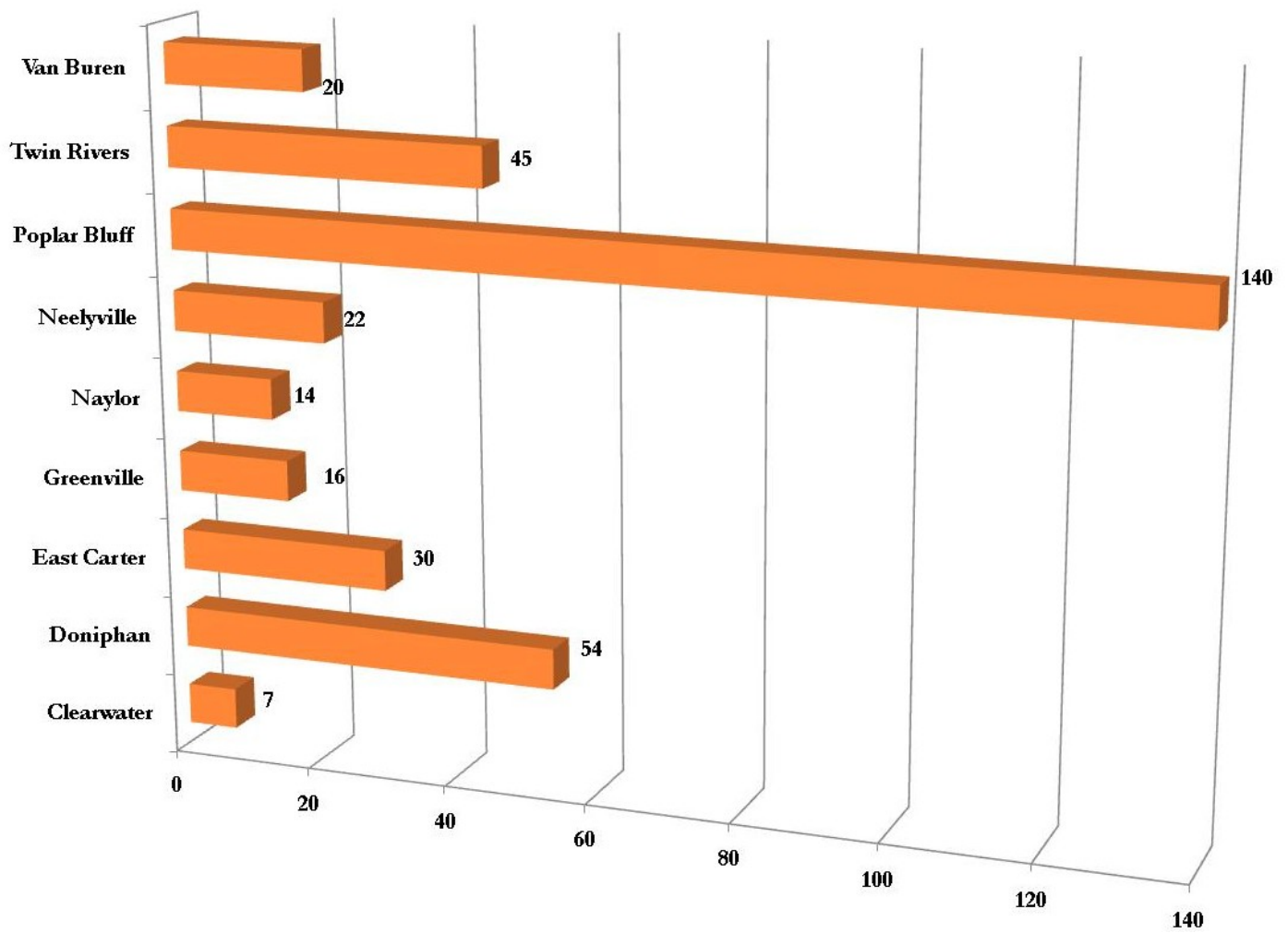
### May 2010 High School Graduates Enrolled in 10/Fall by High School



# Recent High School Graduates by School

## In-District High Schools

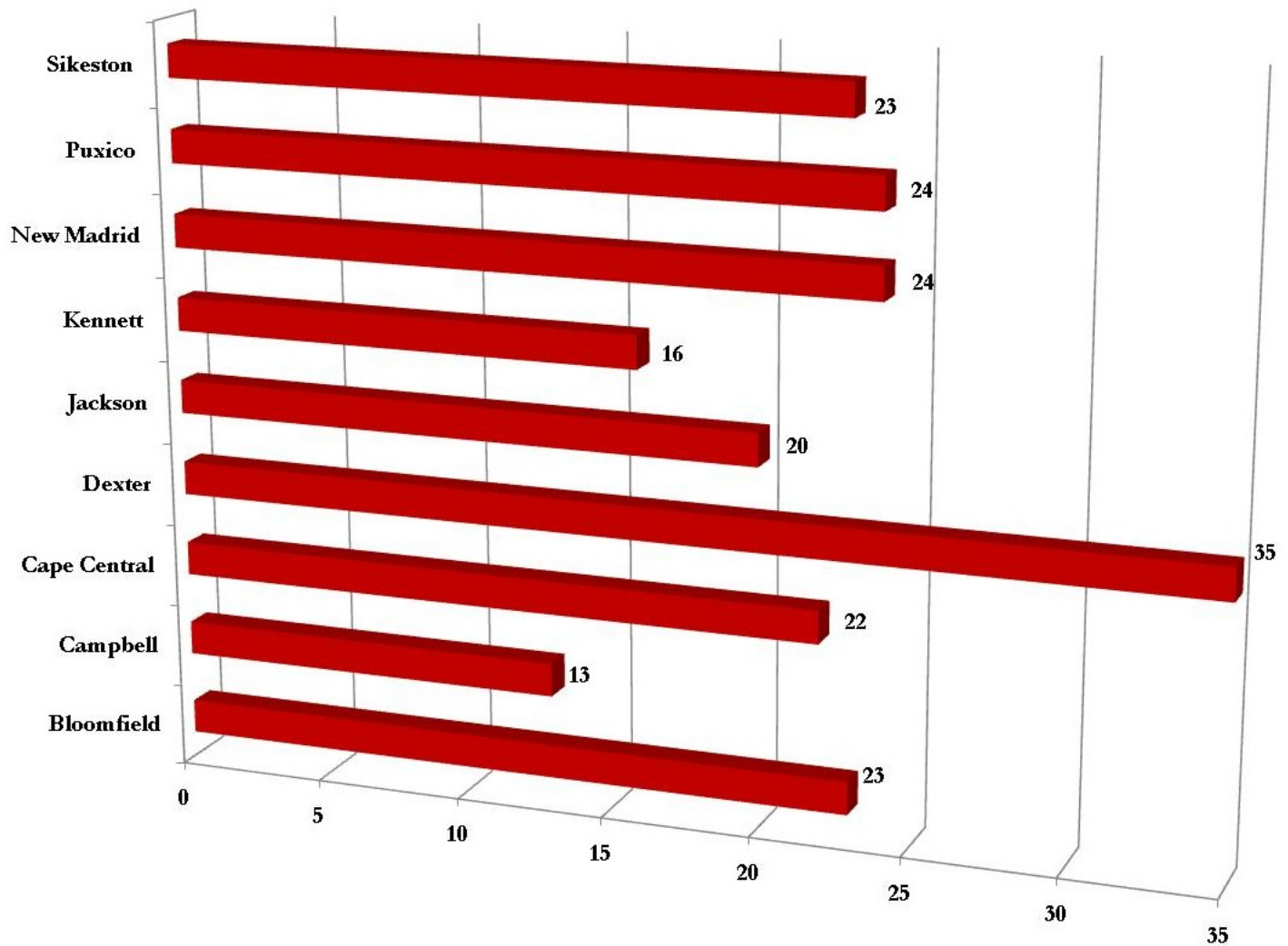
### May 2010 High School Graduates Enrolled in 10/Fall by High School



# Recent High School Graduates by School

## Out-of-District High Schools

### May 2010 High School Graduates Enrolled in 10/Fall by High School



# Recent High School Graduates by School

## In-District High Schools

### Percentage of May 2010 High School Graduates from In-District High Schools Enrolled in 10/Fall

High School	# of 2010 Graduates Enrolled	# of 2010 Graduates	% of 2010 Graduates Enrolled	County
Neelyville	22	53	43%	Butler
Poplar Bluff *	140	263	37%	Butler
Twin Rivers *	45	69	44%	Butler
East Carter *	30	47	56%	Carter
Van Buren	20	38	50%	Carter
Doniphan	54	103	56%	Ripley
Naylor	14	23	62%	Ripley
Clearwater *	7	82	17%	Wayne
Greenville *	16	55	32%	Wayne

\* A+ School

## Recent High School Graduates by School

### Out-of-District High Schools

#### Percentage of May 2010 High School Graduates from Out-of-District High Schools Enrolled in 10/Fall

High School	# of 2010 Graduates Enrolled	# of 2010 Graduates	% of 2010 Graduates Enrolled	County
Leopold	1	23	4%	Bollinger
Woodland *	4	64	6%	Bollinger
Zalma	2	8	25%	Bollinger
Cape Central *	22	243	9%	Cape Girardeau
Delta R-5	2	26	8%	Cape Girardeau
Jackson	20	378	5%	Cape Girardeau
Notre Dame	8	118	7%	Cape Girardeau
Campbell	13	37	35%	Dunklin
Clarkton *	9	20	45%	Dunklin
Holcomb	9	36	25%	Dunklin
Kennett *	16	109	15%	Dunklin
Malden *	12	65	18%	Dunklin
Senath-Hornersville	6	54	11%	Dunklin
West Plains *	5	289	2%	Howell
Charleston *	12	76	16%	Mississippi
East Prairie	11	60	18%	Mississippi
Gideon *	3	19	16%	New Madrid
New Madrid	24	113	21%	New Madrid
Portageville	8	54	15%	New Madrid

\* A+ School

## Recent High School Graduates by School

### Out-of-District High Schools

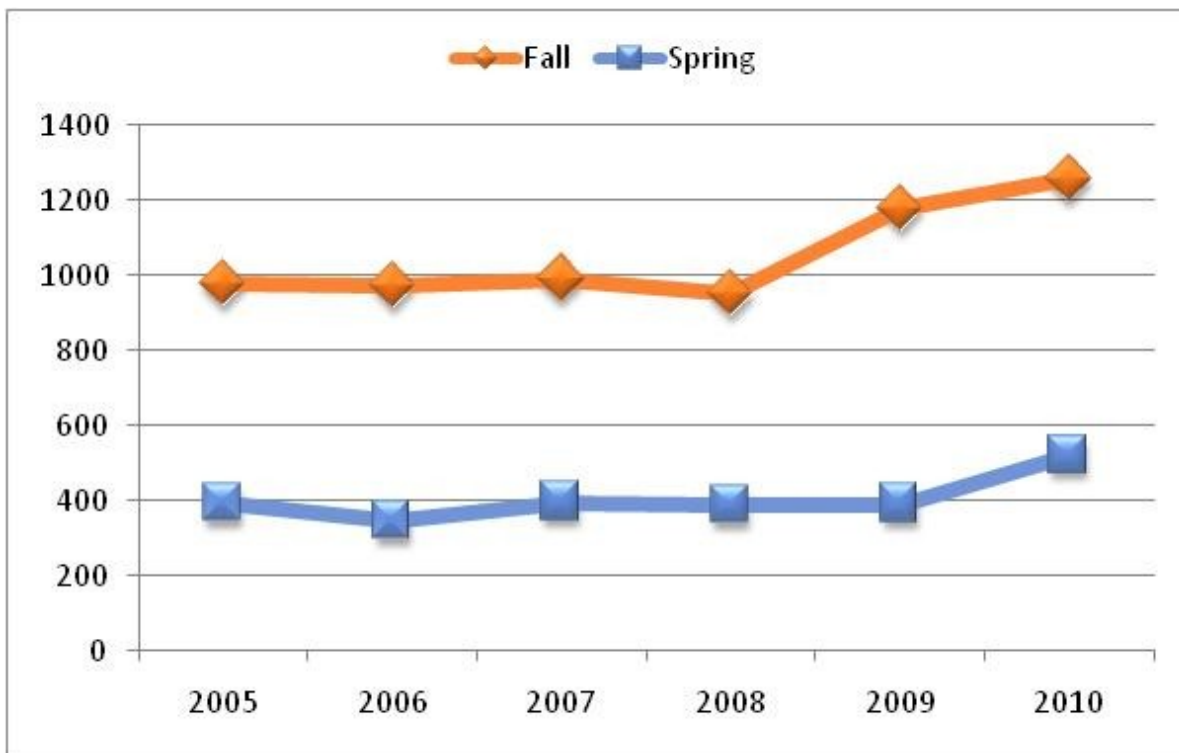
#### Percentage of May 2010 High School Graduates from Out-of-District High Schools Enrolled in 10/Fall

High School	# of 2010 Graduates Enrolled	# of 2010 Graduates	% of 2010 Graduates Enrolled	County
Alton *	5	55	9%	Oregon
Couch *	7	34	21%	Oregon
Thayer *	5	53	9%	Oregon
Caruthersville *	7	70	10%	Pemiscot
Hayti	6	50	12%	Pemiscot
North Pemiscot	3	19	16%	Pemiscot
South Pemiscot	1	38	3%	Pemiscot
Chaffee	2	34	6%	Scott
Oran	6	30	20%	Scott
Scott City R-1	11	85	13%	Scott
Scott County Central	7	18	39%	Scott
Scott County R-4	8	78	10%	Scott
Sikeston *	23	246	9%	Scott
Eminence	1	17	6%	Shannon
Advance	6	41	15%	Stoddard
Bell City *	5	19	26%	Stoddard
Bloomfield *	23	67	34%	Stoddard
Dexter	35	136	26%	Stoddard
Puxico *	24	48	50%	Stoddard
Richland	6	24	25%	Stoddard

\* A+ School

# New Students

## Number of New Students By Term

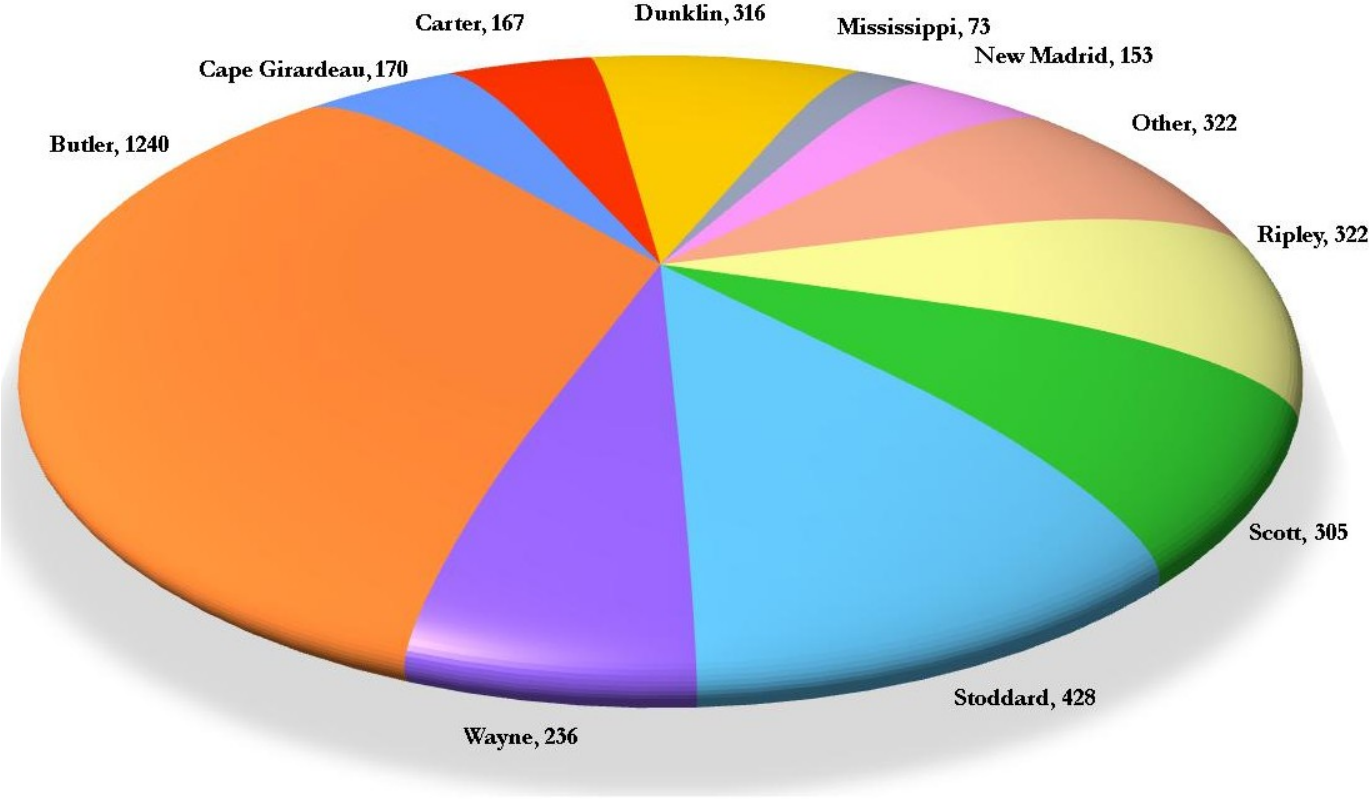


	2005	2006	2007	2008	2009	2010
Fall	977	972	990	951	1177	1256
Spring	393	345	395	388	390	520



# Total Student Body

## 10/Fall Students by County



# Total Student Body

## Headcount—Credit Hours—FTE

School Term	Headcount	Credit Hours	FTE	Unduplicated Headcount	Annual FTE
<b>2010-2011</b>					
10/Fall	3,732	40,413	2,694		
11/Winter	NA	NA			
11/Spring	NA	NA			
11/Summer	NA	NA			
Total		Incomplete		Incomplete	Incomplete
<b>2009-2010</b>					
09/Fall	3,534	37,519	2,501		
10/Winter	313	1,223			
10/Spring	3,473	36,219			
10/Summer	1,438	9,061			
Total		84,022		4,639	2,801
<b>2008-2009</b>					
08/Fall	3,120	33,191	2,213		
09/Winter	260	932			
09/Spring	3,023	31,659			
09/Summer	1,169	6,963			
Total		72,745		4472	2,425
<b>2007-2008</b>					
07/Fall	3,190	34,302	2,287		
08/Winter	227	790			
08/Spring	3,013	31,270			
08/Summer	1,132	6,312			
Total		72,674		4531	2,422
<b>2006-2007</b>					
06/Fall	3,002	31,112	2,074		
07/Winter	168	610			
07/Spring	2,896	29,673			
07/Summer	1,109	6,296			
Total		67,691		4323	2,256

Fall FTE is derived by dividing the total term hours by 15.

Annual FTE is calculated as the total hours divided by 30.

Figures in this table differ from IPEDS and DHE Reporting in that these numbers include "auditing" students.

# Total Student Body

## Gender

Gender	2006 Fall		2007 Fall		2008 Fall		2009 Fall		2010 Fall	
Female	2061	68.65%	2148	67.34%	2073	66.44%	2313	65.45%	2456	65.81%
Male	941	31.35%	1042	32.66%	1047	33.56%	1221	34.55%	1276	34.19%
Total	3002	100.00%	3190	100.00%	3120	100.00%	3534	100.00%	3732	100.00%

## Age

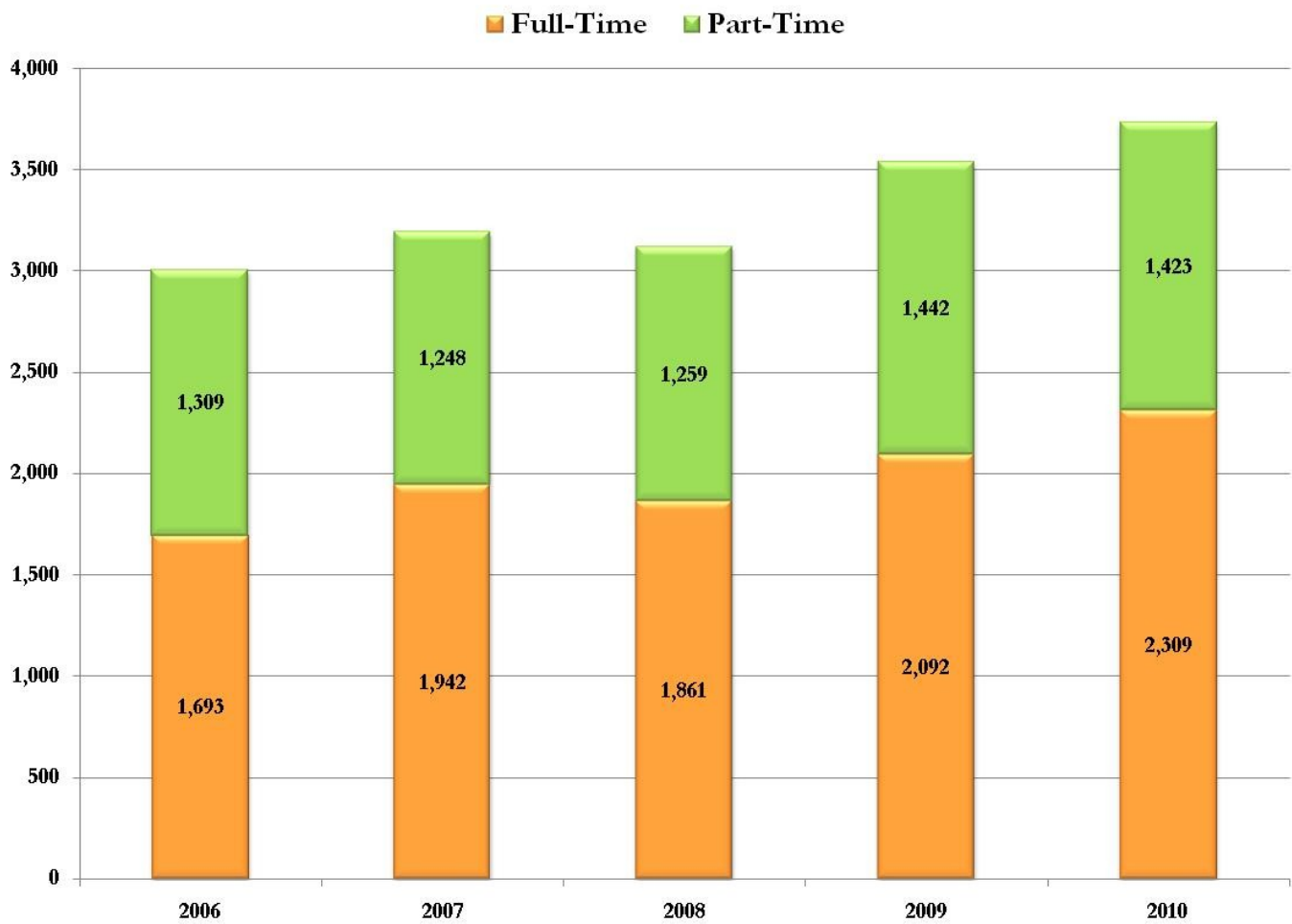
Age Group	2006 Fall		2007 Fall		2008 Fall		2009 Fall		2010 Fall	
<20	1172	39.04%	1135	35.58%	1145	36.70%	1239	35.06%	1358	36.39%
20-24	714	23.78%	819	25.67%	748	23.97%	929	26.29%	962	25.78%
25-34	613	20.42%	629	19.72%	613	19.65%	734	20.77%	775	20.77%
35+	503	16.76%	607	19.03%	614	19.68%	632	17.88%	637	17.07%
Total	3002	100.00%	3190	100.00%	3120	100.00%	3534	100.00%	3732	100.00%
Average Age	25		26		26		26		26	

## Race and Ethnicity

Ethnicity	2006 Fall		2007 Fall		2008 Fall		2009 Fall		2010 Fall	
Black	210	7.00%	221	6.93%	261	8.37%	317	8.97%	399	10.69%
American Indian/Alaska Native	15	0.50%	19	0.60%	14	0.45%	17	0.48%	17	0.46%
Asian	14	0.47%	15	0.47%	16	0.51%	14	0.40%	12	0.32%
Hawaiian/Pacific Islander									2	0.05%
Hispanic	35	1.17%	33	1.03%	46	1.47%	43	1.22%	57	1.53%
White	2673	89.04%	2846	89.22%	2751	88.17%	3116	88.17%	3235	86.68%
Race/ethnicity unknown	55	1.83%	56	1.76%	32	1.03%	27	0.76%	10	0.27%
Total	3002	100.00%	3190	100.00%	3120	100.00%	3534	100.00%	3732	100.00%

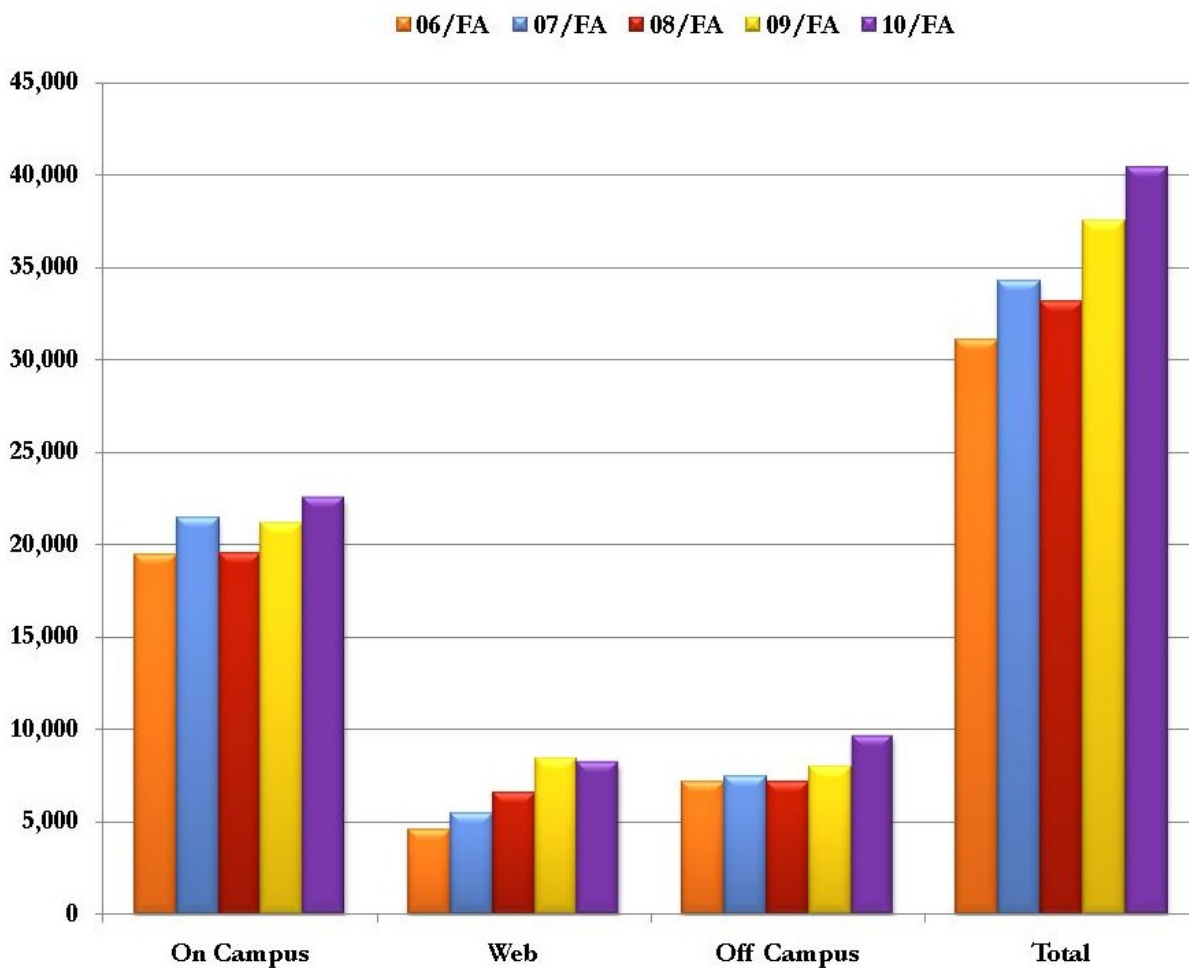
# Total Student Body

## Full-Time and Part-Time Headcount



# Credit Hours for Fall Sessions

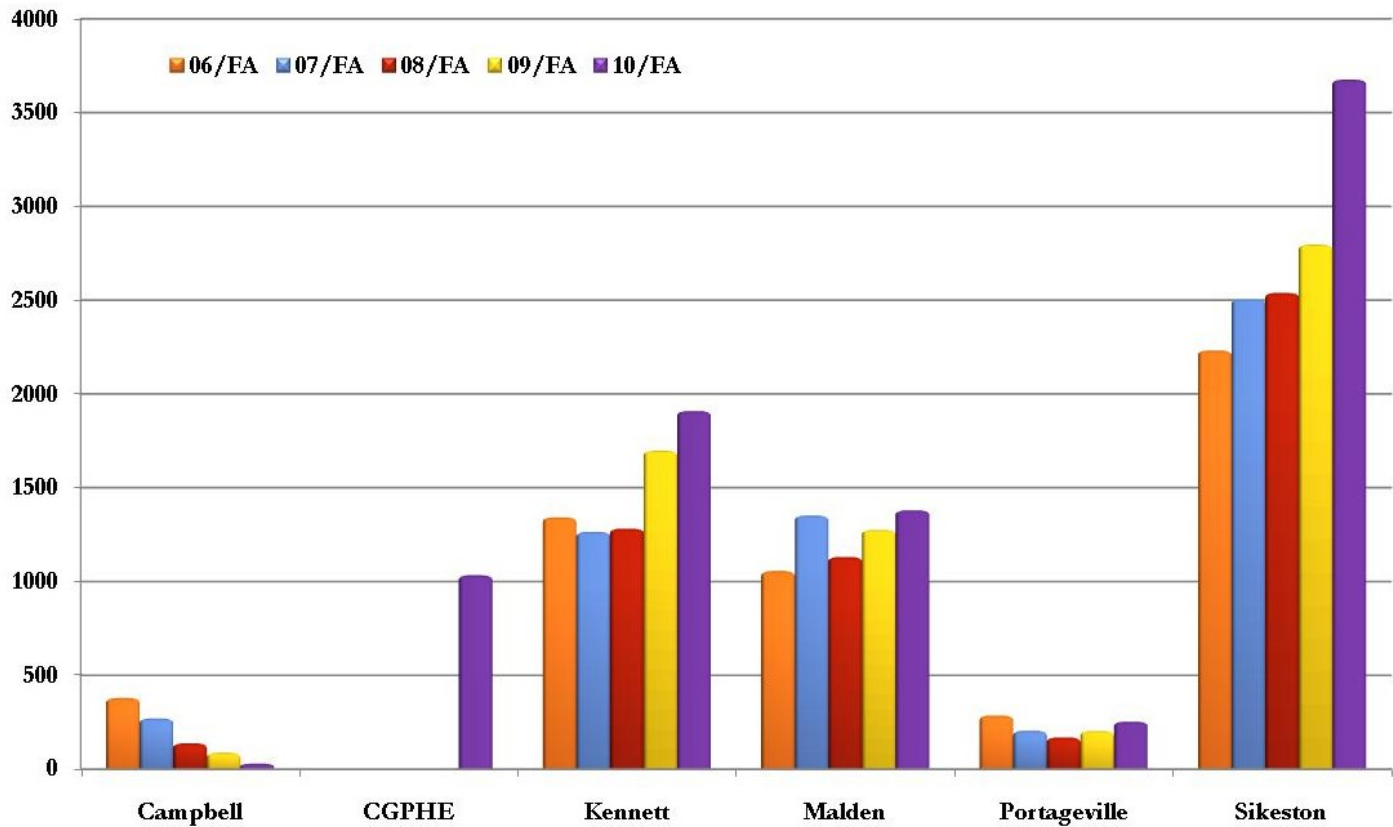
## Total Credit Hours



	On Campus	Web	Off Campus	Total
06/FA	19,419	4,541	7,152	31,112
07/FA	21,430	5,442	7,430	34,302
08/FA	19,501	6,568	7,122	33,191
09/FA	21,191	8,391	7,937	37,519
10/FA	22,515	8,213	9,685	40,413

# Credit Hours for Fall Sessions

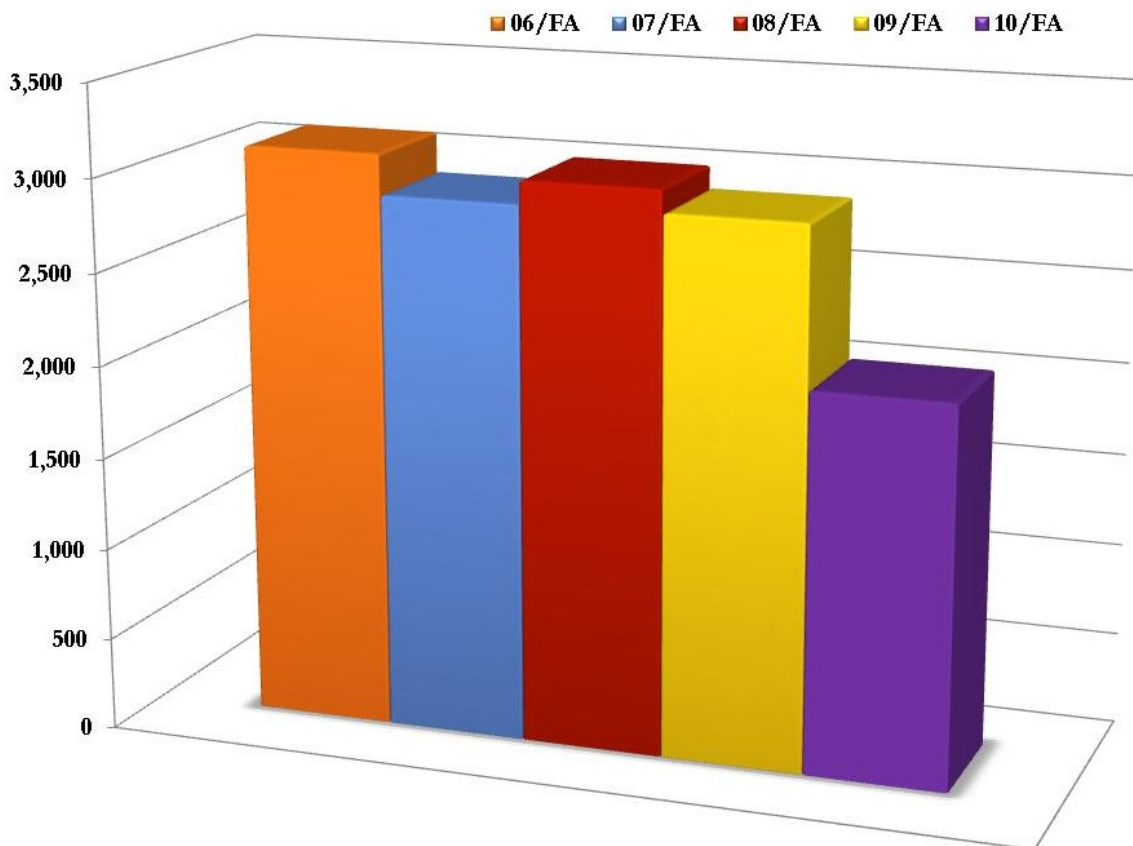
## Off-Campus Centers



	Campbell	CGPHE	Kennett	Malden	Portageville	Sikeston
06/FA	379		1,342	1,056	286	2,232
07/FA	270		1,265	1,352	205	2,505
08/FA	138		1,282	1,131	169	2,539
09/FA	87		1,697	1,275	203	2,796
10/FA	29	1,034	1,909	1,380	253	3,676

# Credit Hours for Fall Sessions

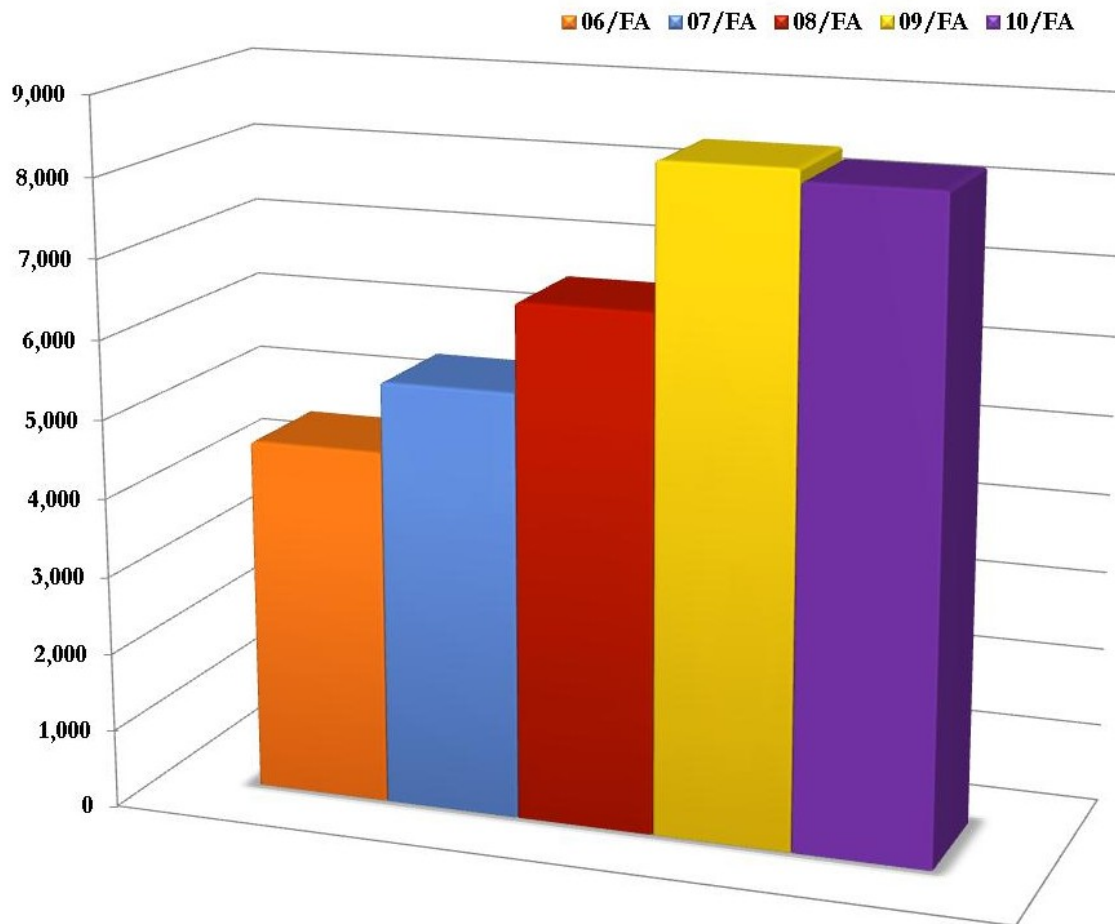
## ITV Courses



	06/FA	07/FA	08/FA	09/FA	10/FA
<b>Credit Hours</b>	3,117	2,900	3,028	2,907	2,053
<b>Sections Offered</b>	172	173	169	134	108

# Credit Hours for Fall Sessions

## Web Courses

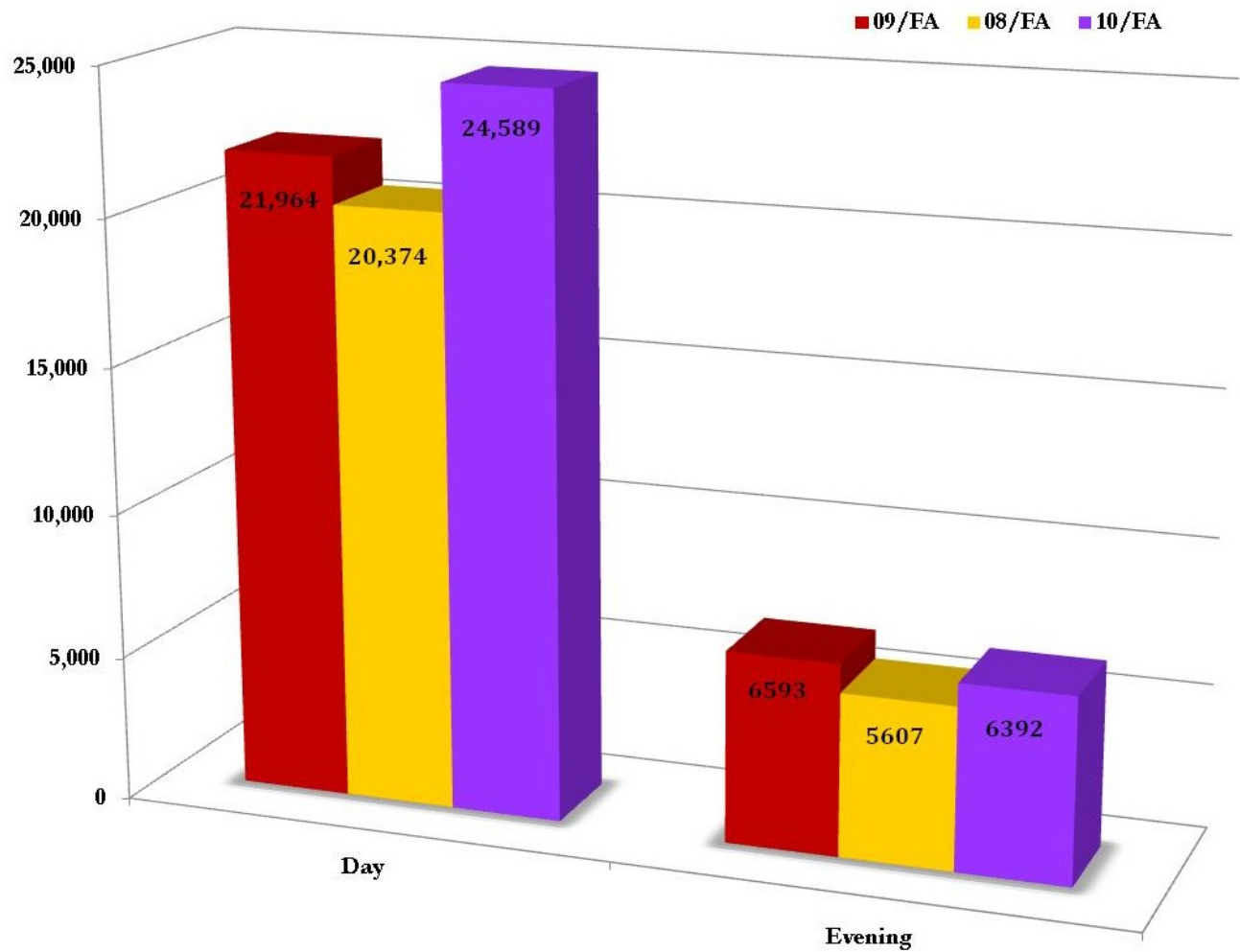


	06/FA	07/FA	08/FA	09/FA	10/FA
Credit Hours	4,541	5,442	6,568	8,391	8,243
Sections Offered	55	74	96	107	103



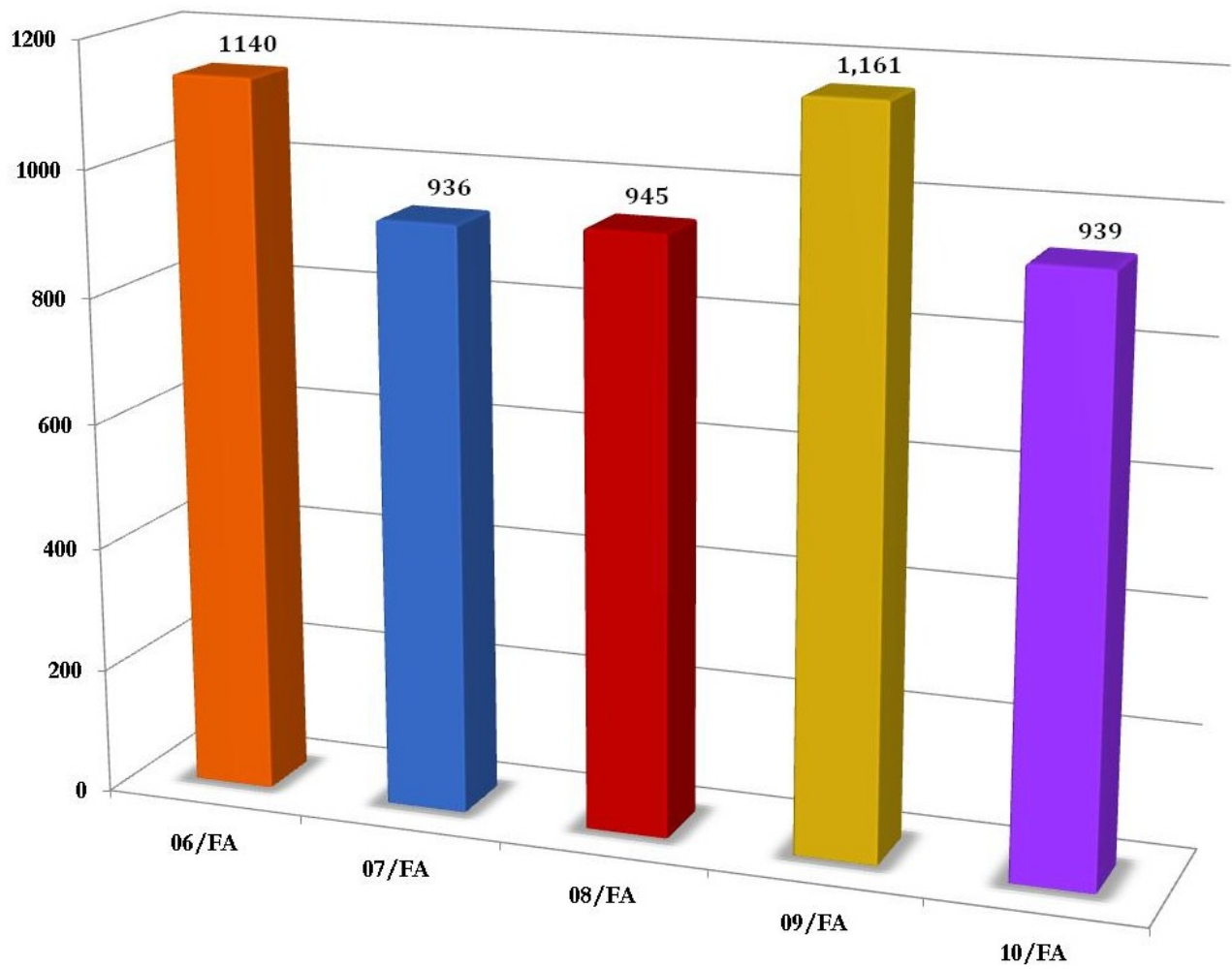
# Credit Hours for Fall Sessions

## Day/Evening Courses



# Credit Hours for Fall Sessions

## Dual Credit Courses



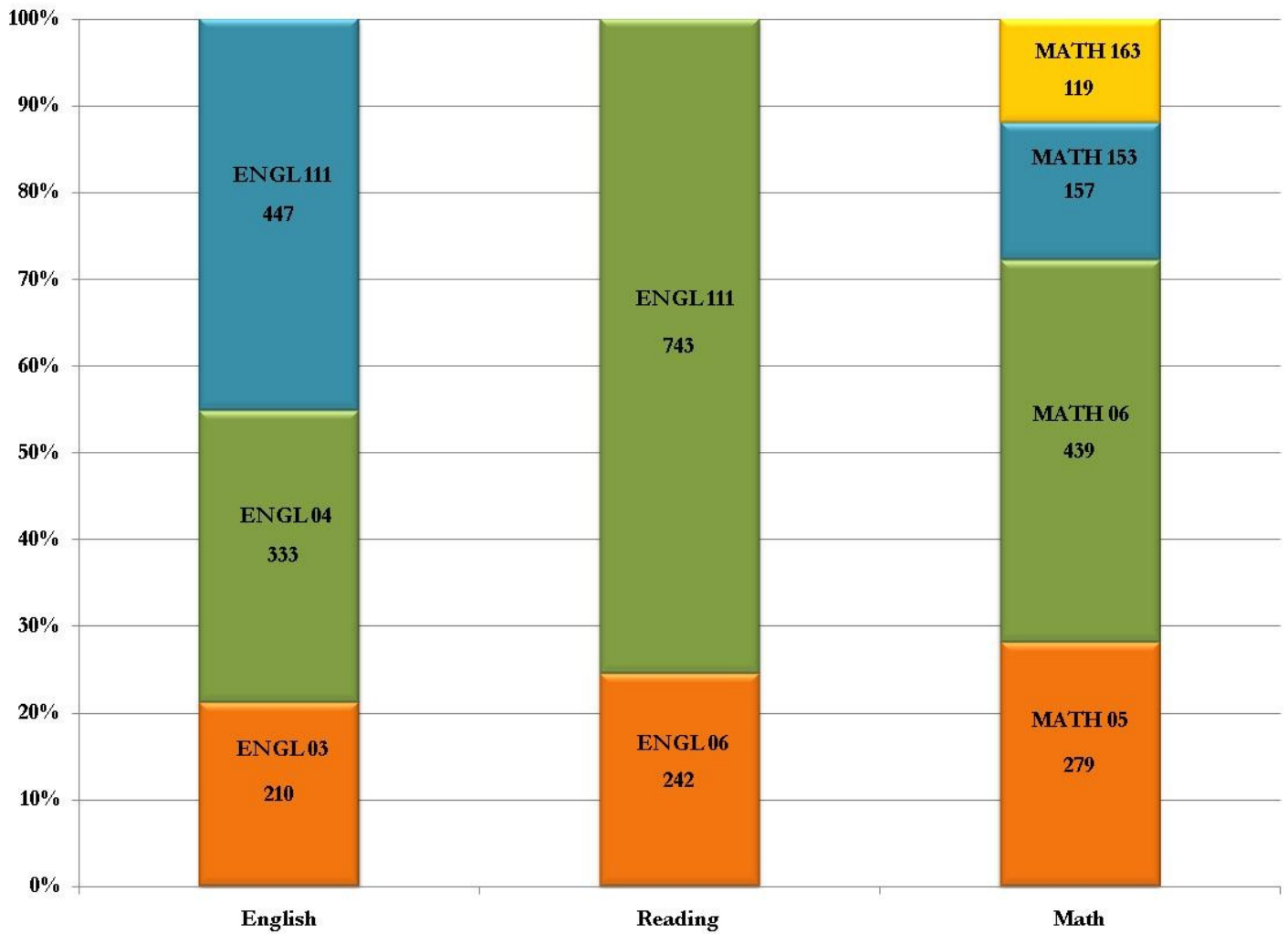
# Census Comparisons

## Percentage Change in Credit Hours

	Percentage Change in Credit Hours 06/Fall to 07/Fall	Percentage Change in Credit Hours 07/Fall to 08/Fall	Percentage Change in Credit Hours 08/Fall to 09/Fall	Percentage Change in Credit Hours 09/Fall to 10/Fall
<u>ON-CAMPUS</u>				
Regular On-Campus	12.26%	-10.55%	9.57%	7.67%
ITV-on campus	-19.28%	24.63%	-5.43%	-19.37%
<u>TOTAL ON-CAMPUS</u>	10.36%	-9.00%	8.67%	6.25%
<u>TOTAL WEB COURSES</u>	19.84%	20.69%	27.76%	-2.12%
<u>OFF-CAMPUS</u>				
<u>Out of District Locations</u>				
Bernie Center				
Campbell Center	-28.76%	-48.89%	-36.96%	-66.67%
CGPHE Center				100.00%
Kennett Center	-5.74%	1.34%	32.37%	12.49%
Malden Center	28.03%	-16.35%	12.73%	8.24%
Portageville Center	-28.32%	-17.56%	20.12%	24.63%
Sikeston Center	12.23%	1.36%	10.12%	31.47%
Other Out of District	17.25%	1.34%	-6.27%	-28.70%
<u>In-District Locations</u>				
Doniphan Center	-5.56%	24.63%	5.31%	-38.66%
Piedmont Center	51.16%	-41.54%	-21.05%	-83.33%
Van Buren Center	-43.33%	0.00%	33.33%	-5.88%
Other In District	-6.82%	5.85%	1.38%	-13.18%
<u>TOTAL OFF CAMPUS</u>	3.89%	-4.15%	11.44%	22.02%
<u>TOTAL REGISTERED</u>	8.61%	-7.75%	9.41%	38.74%

# Placement Scores

## First Time Students



# Students by Major

## 10/Fall Students by Academic Program

Description	Program	Students
Accounting Technology	AAS.ACTE	42
Admin of Justice	AS.ADJU	75
Agribusiness	AAS.AGBU	8
Agriculture	AA.AGRI	29
Agritechnology	AAS.AGTE	4
Applied Technology	AAS.TECH	2
Arts	AA.ARTS	22
Biology	AA.BIOL	19
Business Administration	AA.BUAD	141
Business Education	AA.BUED	4
Business Management	AAS.BMGT	86
Business Management Evening	AAS.BMGTE	8
Child Care and Guidance	AAS.CCG	3
Criminal Justice - Corrections	AAS.CRJU	86
Criminal Justice/Police Science	CRJUCERT	1
DTEC - Auto Collision Option	AAS.DTEC.ACDT	1
DTEC - Auto Service Option	AAS.DTEC.ASDT	3
DTEC - Building Trades Option	AAS.DTEC.BTDT	6
DTEC - Computer Maintenance Option	AAS.DTEC.CMDT	14
DTEC - Cosmetology Option	AAS.DTEC.CTDT	7
DTEC - Culinary Arts Option	AAS.DTEC.CADT	5
DTEC - Diesel Tech Option	AAS.DTEC.DIDT	3
DTEC - Drafting Technology Option	AAS.DTEC.DFDT	1
DTEC - Graphic Communications Option	AAS.DTEC.GCDT	12
DTEC - HVAC Option	AAS.DTEC.HVDT	4
DTEC - Machine Tech Option	AAS.DTEC.MCDT	2
DTEC - Television/Radio Production Option	AAS.DTEC.TRDT	1
DTEC - Welding Option	AAS.DTEC.WEDT	8
Early Childhood Development	AAS.ECD	96
Early Childhood Development Short Term Certificate	ECD.CERT	1
Early Childhood Development-1year Certificate	CCGC	7
Early Childhood Education	AA.ECED	26

# Students by Major

## 10/Fall Students by Academic Program

Description	Program	Students
Education - Elementary Education	AAT.ELEM	157
Education - Instrumental	AAT.MUED.INSTRUMNTL	2
Education - Middle School	AA.MSED	2
Education - Middle School Education	AAT.MSED	30
Education - Mid-Level Elementary Arts & Social Science	AA.MLEL.ARTS/SOCSCI	4
Education - Mid-Level Elementary Math & Science	AA.MLEL.MATH/SCI	1
Education - Secondary Education	AAT.EDUC	72
Education -Secondary	AA.EDUC	26
Education - Vocal	AAT.MUED.VOCAL	3
Elementary Education	AA.ELEM	58
Emergency Medical Services	AAS.PARA	18
Emergency Medical Tech - Basic	EMDS-BASIC	2
English	AA.ENGL	11
Environ/Occ Safety & Health	AAS.EOSH	15
Environmental Health	AS.ENVHLTH	1
Fire Science	AAS.FIRESCI	12
Fire Science Certificate	FIRE.ONEYR.CERT	2
Forensic Science	AA.FRSC	6
Forestry	AA.FORS	11
Forestry Technology	AAS.FRST	27
General Education	AA.GNED	552
General Education - Partnership	AA.GNED.PARTNERSHIP	110
History	AA.HIST	15
Industrial Tech - Automated Manufacturing	AAS.IND.TECMAFT	7
Industrial Tech - Civil & Construction	AAS.IND.TECCIVL	25
Industrial Tech - Drafting & Manufacturing	AAS.IND.TECMEDR	8
Industrial Tech - Industrial Maintenance	AAS.IND.MAINTEN	3
Industrial Tech - Power Plant	AAS.IND.PPIT	16
Industrial Technician	ITCERT	1
Info Sys Tech Executive	AAS.IST.EXEC	12
Info Sys Tech Microcomputer	AAS.IST.COMP	20
Info Systems Tech Automated Office Certificate	IST.AOCERT	1
Information Publishing Certificate	INP	2
IST Medical Option	AAS.IST.MEDICAL	38
Journalism	AA.JOUR	14
Library Science	AA.LBSC	4

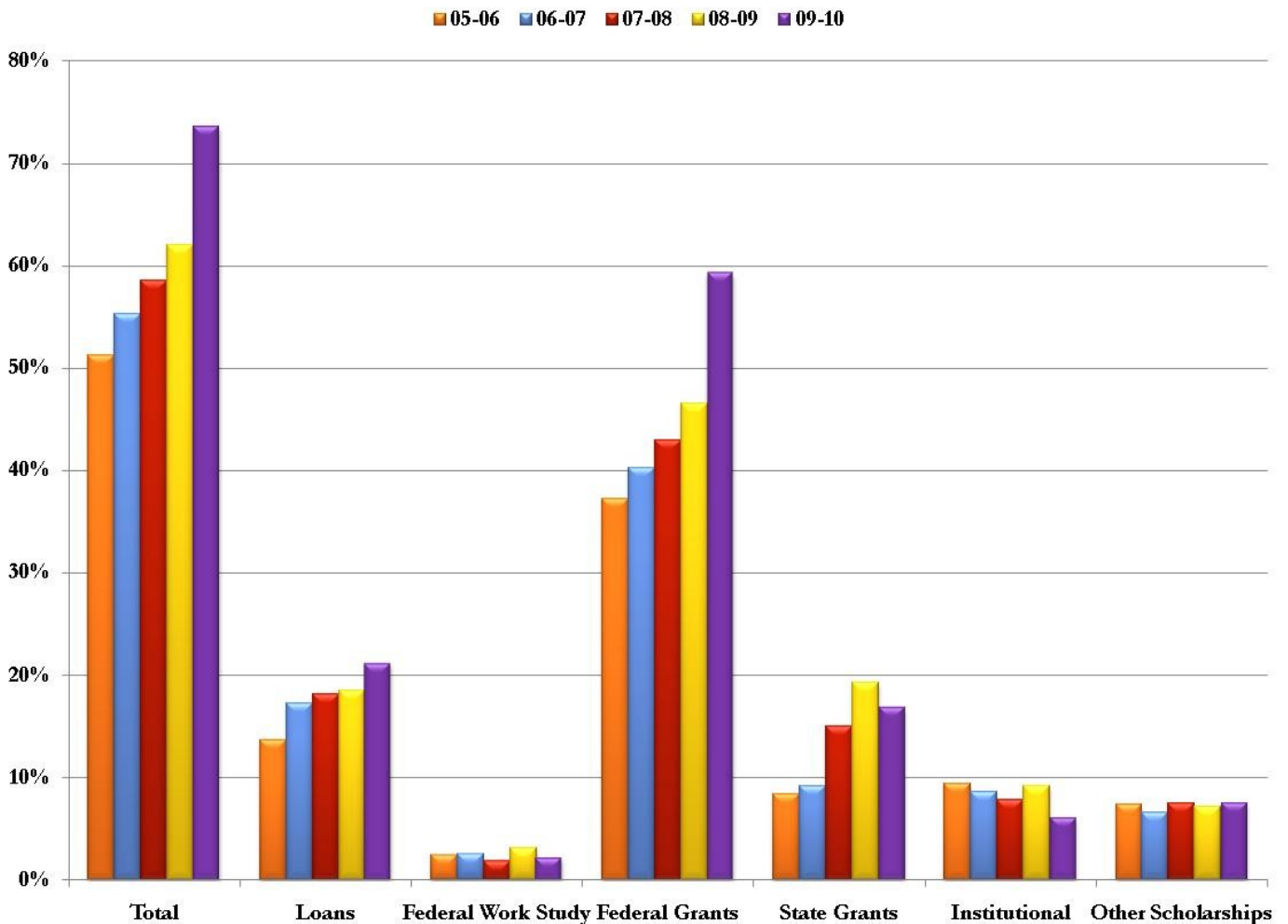
# Students by Major

## 10/Fall Students by Academic Program

Description	Program	Students
LPN/ADN Bridge Program	AAS.LPN/ADN	39
Management and Supervision Certificate	MGSCERT	1
Marketing	MMRCERT	2
Mass Communication	AA.MCOM	5
Math	AA.MATH	5
Medical Lab Technology	AAS.MDLB	12
Music	AA.MUSC	26
Network Administration	AAS.IST.MST	43
Nursing	AAS.ADN	132
Occupational Education	AAS.OCED	1
Office Assistant Cert	IST.ONE-YEARCER	6
Philosophy & Religion	AA.PHIL	5
Physical Education	AA.HPER	11
Physical Sciences	AA.PHYS	1
Political Science	AA.GOV'T	3
Pre-Engineering	AA.ENGR	30
Pre-Engineering	AS.PEGR	8
Pre-Law	AA.PLAW	28
Pre-Medical Laboratory Technology	AAS.PMEDL	27
Pre-Medicine	AA.MEDI	30
Pre-Nursing	AA.PNUR	499
Pre-Optometry	AA.OPTM	1
Pre-Pharmacy	AA.PHAR	15
Pre-Sports Medicine	AA.PSPM	65
Pre-Veterinary Medicine	AA.VETM	15
Psychology	AA.PSYC	77
Quality Control Technician Certificate	QTCERT	1
Sales Certificate	SALCERT	1
Sci-Paraprofessional Educator	AAS.PPED	12
Social Work Education	AA.SWRK	31
Social Work for Southeast	AA.SOCIWRK	48
Sociology	AA.SOCI	11
Speech and Theatre	AA.SPDR	1
Speech Communications	AA.COMM	4
Surgery Technology	CE.SURG	1
Surveying Certificate	SURVCERT	6

## Financial Aid Awarded

### Percentage of students receiving Financial Aid



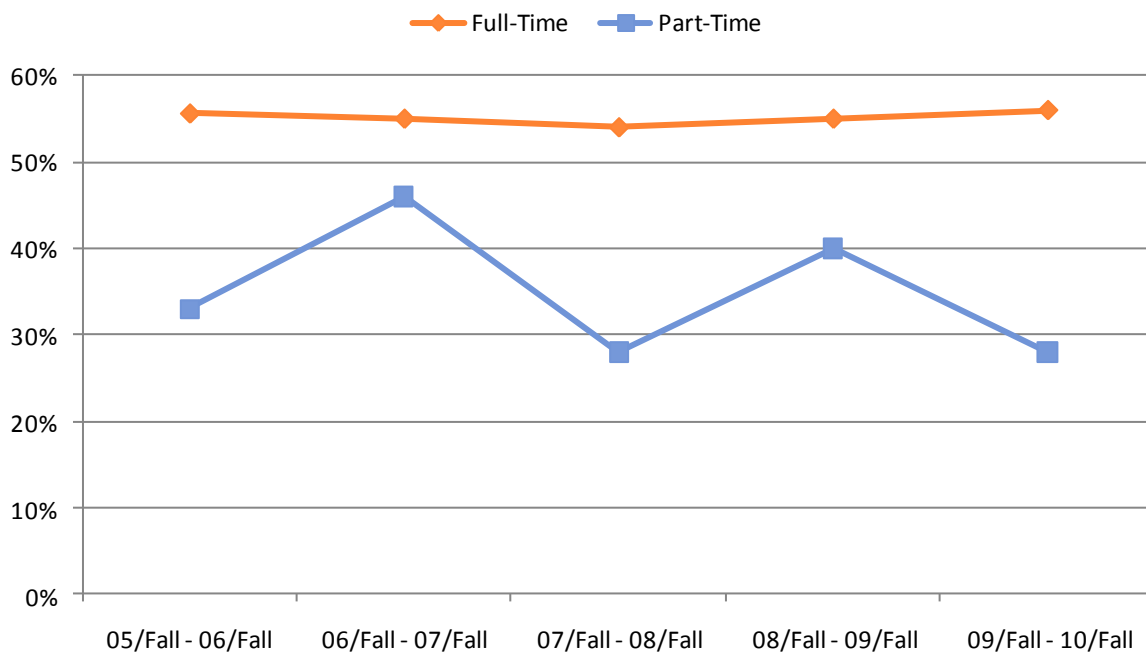
**73.6% of the students received Financial aid during 2009-2010.**

**64.6% of the students received Federal grants and loans during 2009-2010.**



## Retention Rates

### First-Time Student Cohort\*



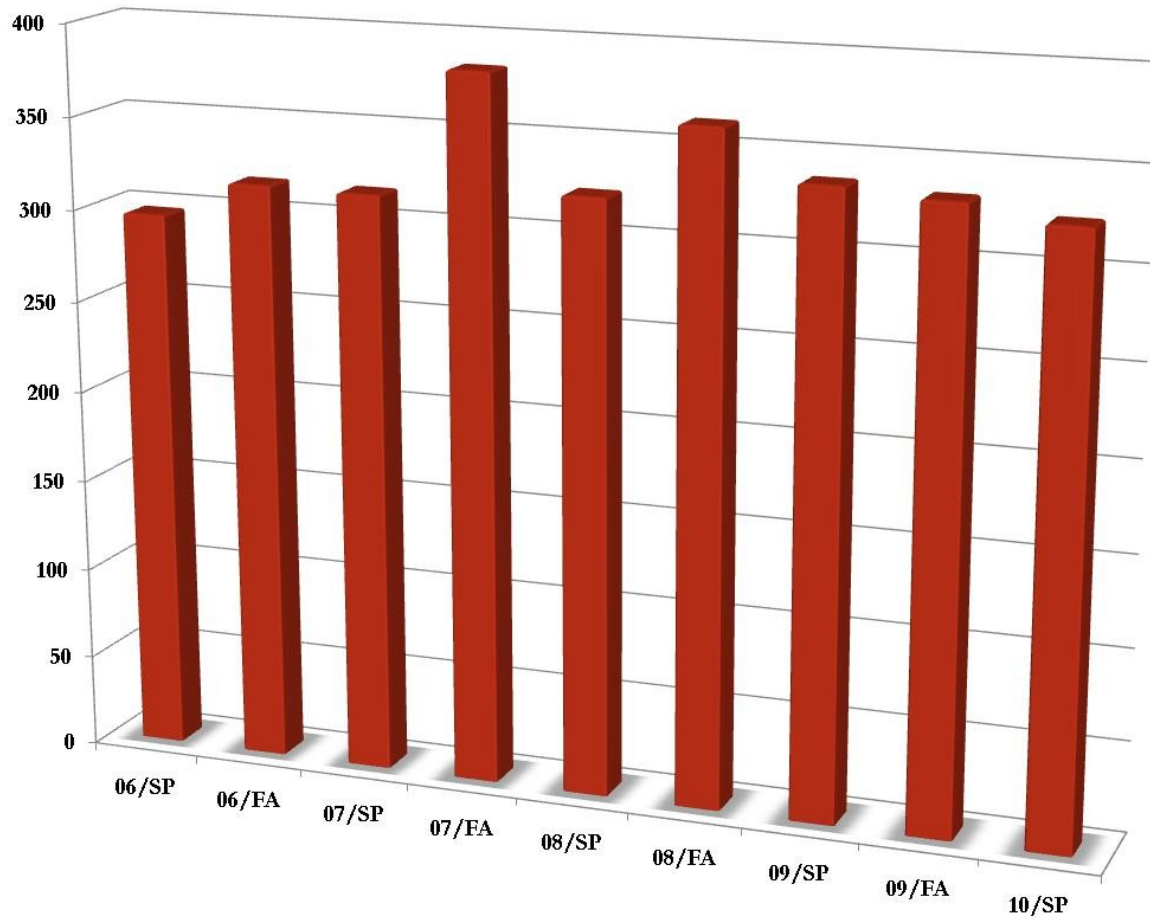
	Full-Time	Part-Time
05/Fall - 06/Fall	56%	33%
06/Fall - 07/Fall	55%	46%
07/Fall - 08/Fall	54%	28%
08/Fall - 09/Fall	55%	40%
09/Fall - 10/Fall	56%	28%

**\*Cohort defined by IPEDS**

**Only first-time students are included. Transfer students are not included.**

# Student Achievement

## Dean's List\*

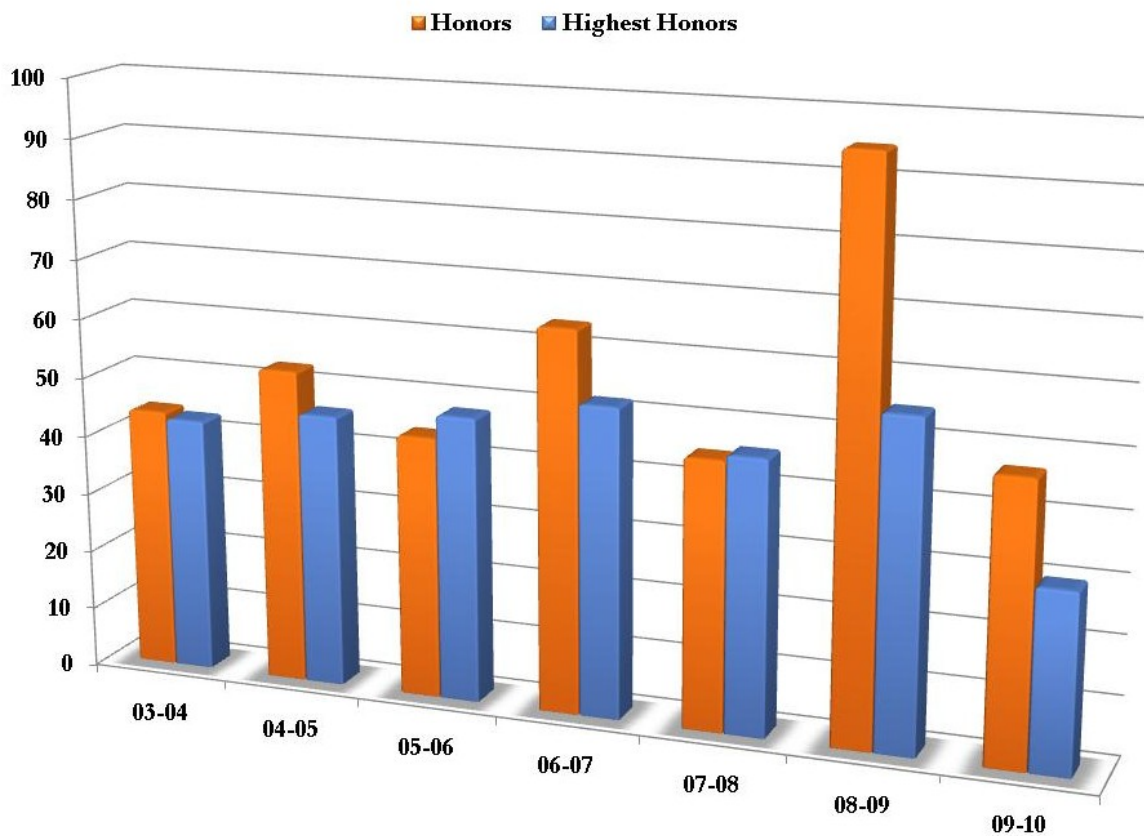


06/SP	06/FA	07/SP	07/FA	08/SP	08/FA	09/SP	09/FA	10/SP
297	317	316	384	323	363	337	333	325

**\*Students must be enrolled in 12 or more hours and earn a GPA of 3.5 or better to be on the Dean's List.**

# Student Achievement

## Graduates with Honors



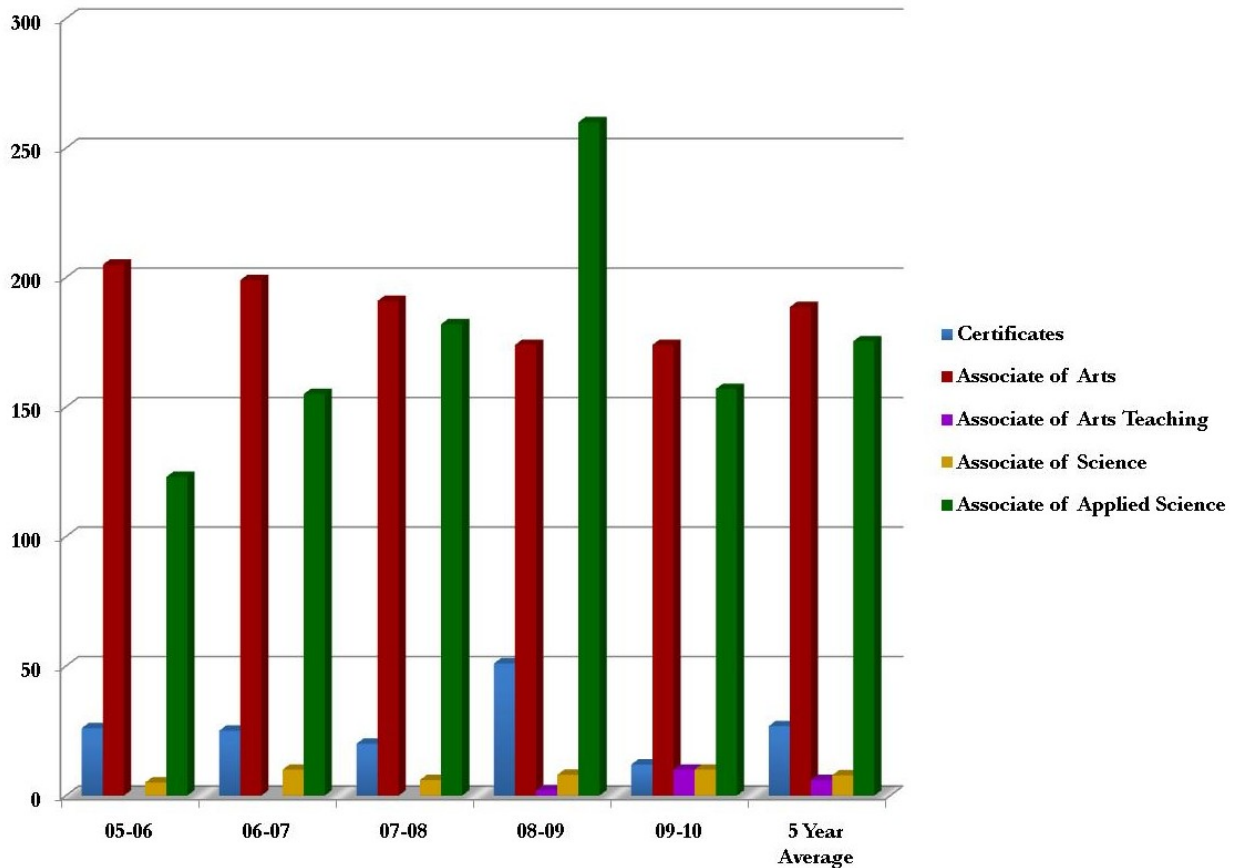
	03-04	04-05	05-06	06-07	07-08	08-09	09-10
Honors*	44	53	44	64	45	95	47
Highest Honors**	43	46	48	52	46	55	30

\*Honors-Graduates with an overall GPA of 3.5 or better.

\*\*Highest Honors-Graduates with an overall GPA of 3.75 or better.

# Degrees and Certificates Conferred

## 2009-2010



	05-06	06-07	07-08	08-09	09-10	5 Year Average
Certificates	26	25	20	51	12	27
Associate of Arts	205	199	191	174	174	189
Associate of Arts Teaching				2	10	6
Associate of Science	5	10	6	8	10	8
Associate of Applied Science	123	155	182	260	157	175
	359	389	399	495	363	401

# Degrees and Certificates Conferred

## 2009-2010

Description	Program	
Accounting Certificate	ACCTCERT	1
Accounting Technology	AAS.ACTE	5
Admin of Justice	AS.ADJU	10
Agribusiness	AAS.AGBU	6
Agriculture	AA.AGRI	7
Applied Technology	AAS.TECH	1
Art	AA.ARTS	1
Biology	AA.BIOL	2
Business Administration	AA.BUAD	16
Business Education	AA.BUED	1
Business Management	AAS.BMGT	15
Business Management Evening	AAS.BMGTE	1
Chemistry	AA.CHEM	1
Child Care and Guidance	AAS.CCG	1
Civil & Construction	AAS.IND.TECCIVL	5
Criminal Justice - Corrections	AAS.CRJU	6
Drafting Technology	AAS.IND.TECMEDR	1
DTEC All Options	AAS.DTEC	11
Early Childhood Development	AAS.ECD	6
Education - Elementary	AAT.ELEM	6
Education - Middle School	AAT.MSED	1
Education - Secondary	AAT.EDUC	3
Education - Secondary	AA.EDUC	2
Electrical Technical Certificate	ETCERT	4
Elementary Education	AA.ELEM	7
Emergency Medical Services - Paramedic	AAS.PARA	1
English	AA.ENGL	1
Environ/Occ Safety & Health	AAS.EOSH	2
Environ/Occ Safety & Health Certificate	EOSHCERT	1
Forestry Technology	AAS.FRST	4
General Education	AA.GNED	95

## Degrees and Certificates Conferred 2009-2010

Description	Program	
History	AA.HIST	1
Industrial Technician Certificate	ITCERT	5
Info Sys Tech Executive	AAS.IST.EXEC	1
Info Sys Tech Medical	AAS.IST.MEDICAL	7
Info Sys Tech Microcomputer	AAS.IST.COMP	2
Journalism	AA.JOUR	1
LPN/ADN Bridge Program	AAS.LPN/ADN	24
Manufacturing & Industrial Systems	AAS.IND.TECMAFT	1
Mass Communication	AA.MCOM	1
Math	AA.MATH	1
Medical Lab Technology	AAS.MDLB	9
Network Administration	AAS.IST.MST	2
Nursing	AAS.ADN	42
Paraprofessional Educator	AAS.PPED	1
Physical Education	AA.HPER	1
Physical Sciences	AA.PHYS	1
Power Plant	AAS.IND.PPIT	3
Pre-Engineering	AA.ENGR	1
Pre-Law	AA.PLAW	3
Pre-Medicine	AA.MEDI	3
Pre-Optometry	AA.OPTM	1
Pre-Pharmacy	AA.PHAR	1
Pre-Sports Medicine	AA.PSPM	5
Pre-veterinary Medicine	AA.VETM	2
Psychology	AA.PSYC	7
Religious Studies	AA.PHIL	1
Social Work Education	AA.SWRK	6
Social Work For Southeast	AA.SOCIWRK	1
Sociology	AA.SOCI	3
Speech Communications	AA.COMM	1
Surveying Certificate	SURVCERT	1
Total		363

## On-Campus Facilities

Dr. H. Tudor Westover Administrative Building

Nelson B. - Brent B. Tinnin Fine Arts Center

Harry L. Crisp Sr. Technology Center

Rivers Ridge Apartments

Ben & Martha Bidewell Fitness Center

Educational Talent Search Center

Arrettia & Herschel Bess Activity Center

Arrettia & Herschel Bess Student Center

Rutland Library

E.K. Porter Distance Learning Center

Bookstore & Gift Shop

Raider Baseball Clubhouse

## Contact Information

Poplar Bluff Campus  
2080 Three Rivers Blvd  
Poplar Bluff, MO 63901  
573.840.9600 877.TRY.TRCC

Center at Campbell  
330 South Locust  
Campbell, MO 63933  
573.246.2250

Center at Kennett  
901C South By-Pass  
Kennett, MO 63857  
573.888.6381

Center at Malden  
2203 Narvel Felts BLVD  
Malden, MO 63863  
573.276.3529

Center at Portageville  
147 Highway T  
Portageville, MO 63873  
573.379.5609

Center at Sikeston  
103 Kathleen Street  
Sikeston, MO 63801  
573.472.5223

Doniphan Site  
303 Spring Street  
Doniphan, MO 63966  
573.996.2915

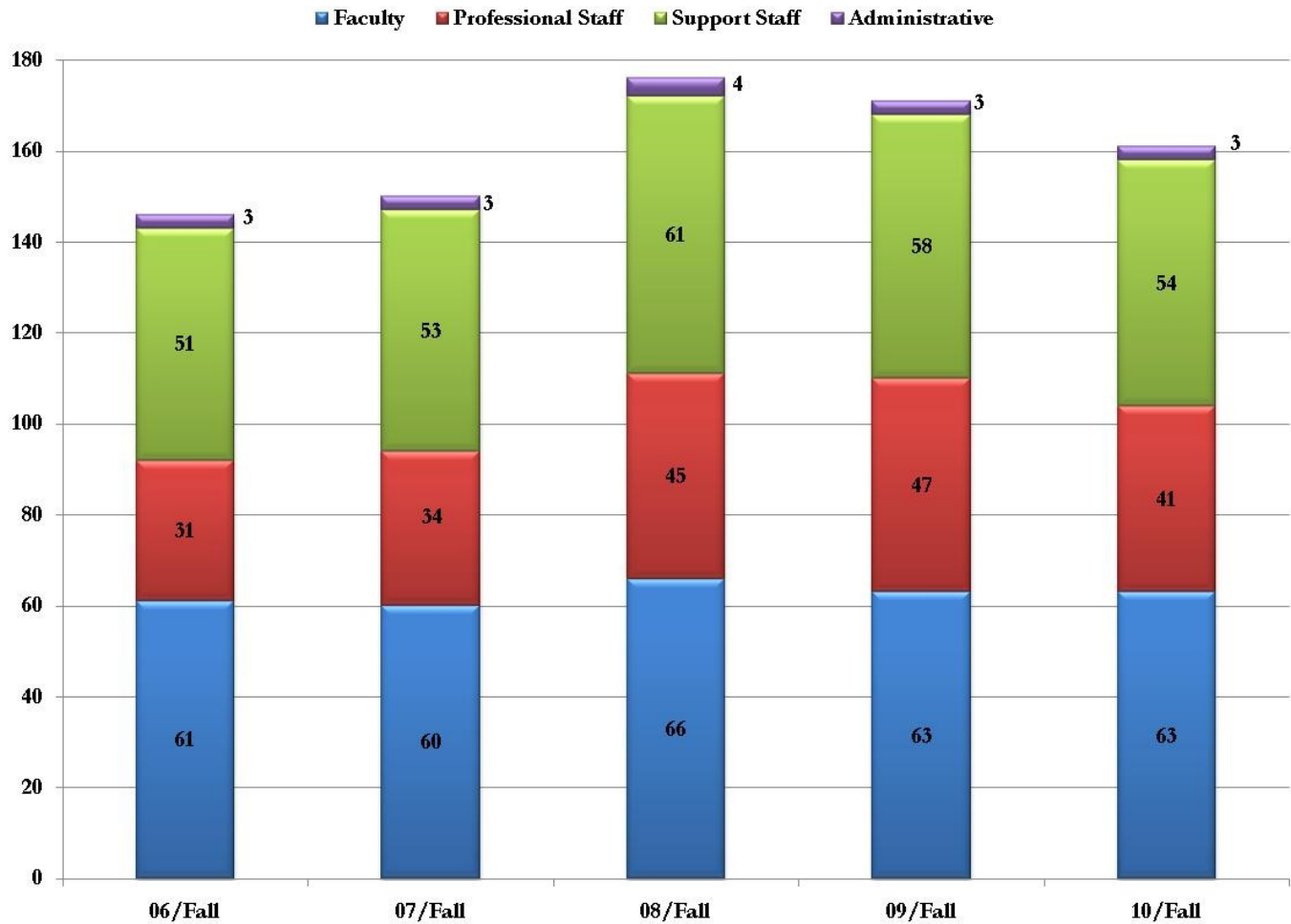
Piedmont Site  
Route 4 Box 1004  
Piedmont, MO 63957  
573.223.4524

Van Buren Site  
202 W. College  
Van Buren, MO 63965  
573.323.4295



# Faculty & Staff\*

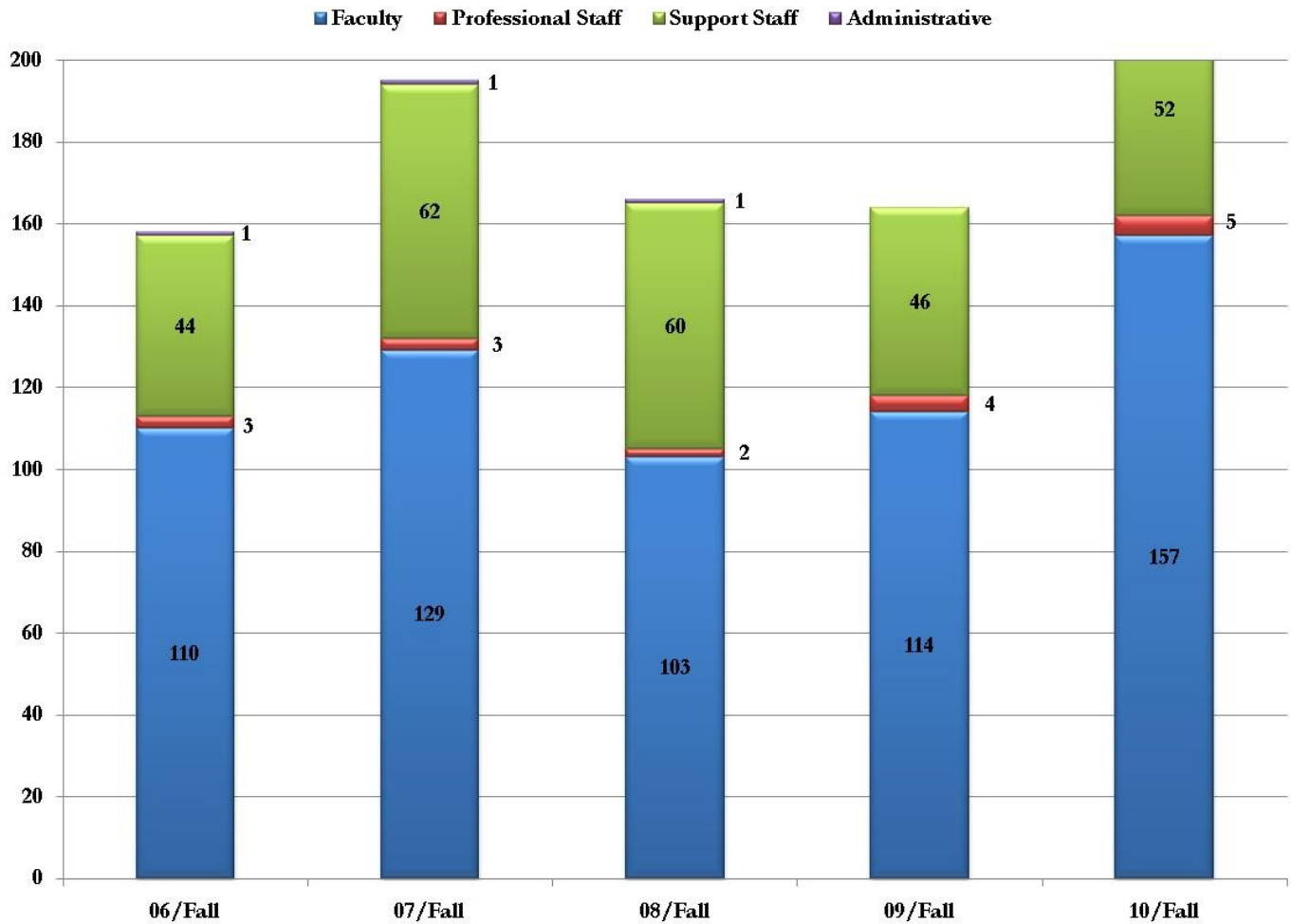
## Full-Time Employees



\*As of November 1, 2010, which is the date used for IPEDS Human Resource Reporting

# Faculty & Staff\*

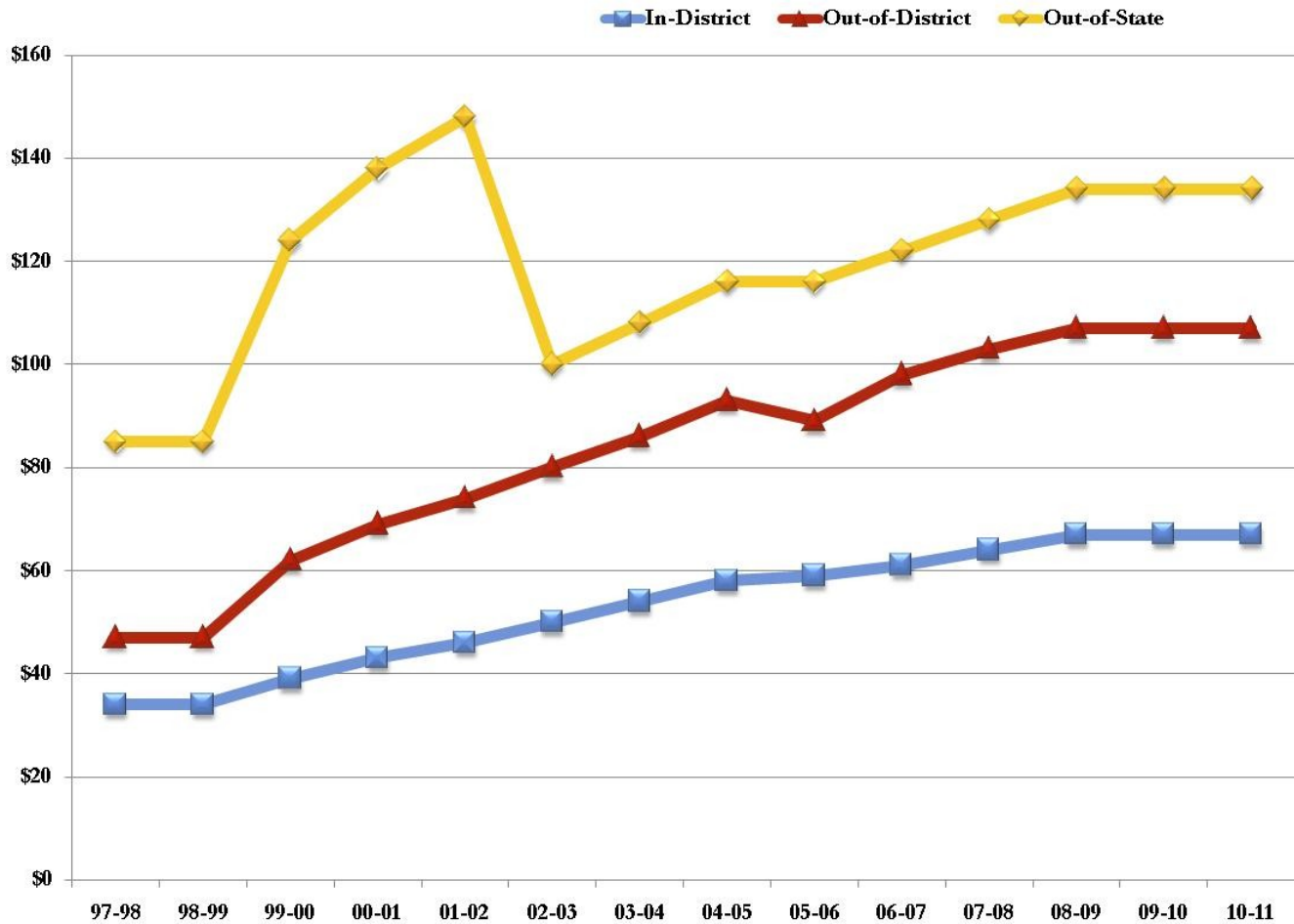
## Part-Time Employees



\*As of November 1, 2010 which is the date used for IPEDS Human Resource Reporting

# Tuition Comparison

## 2010-2011



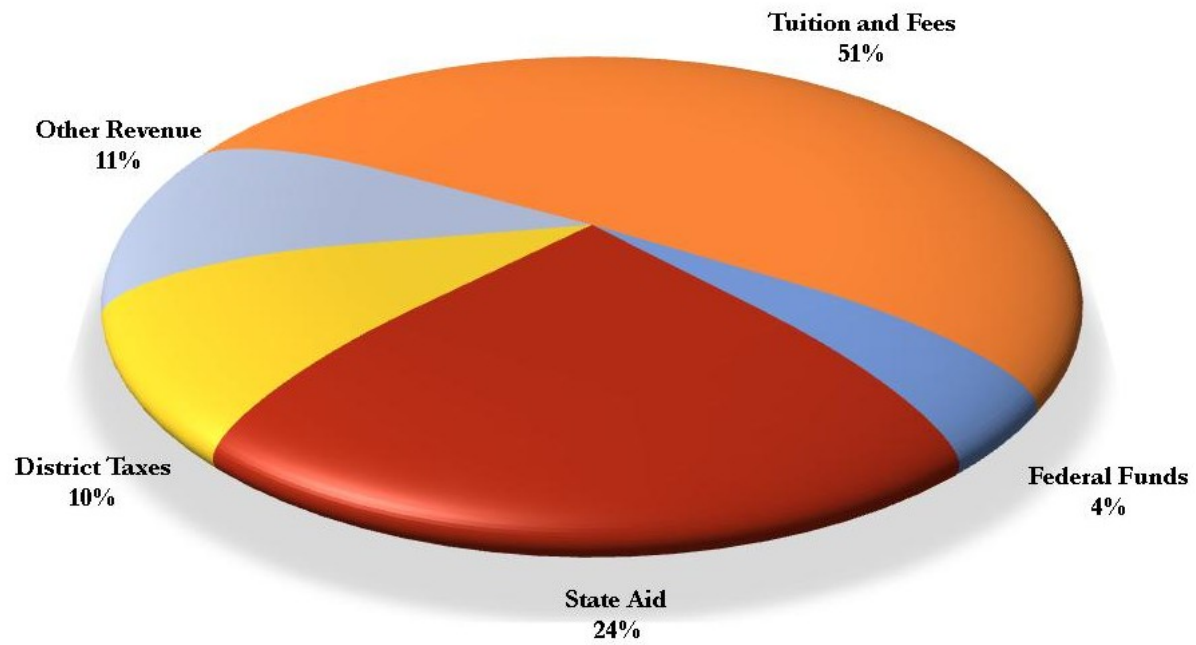
In-District Counties

Butler  
Carter  
Ripley

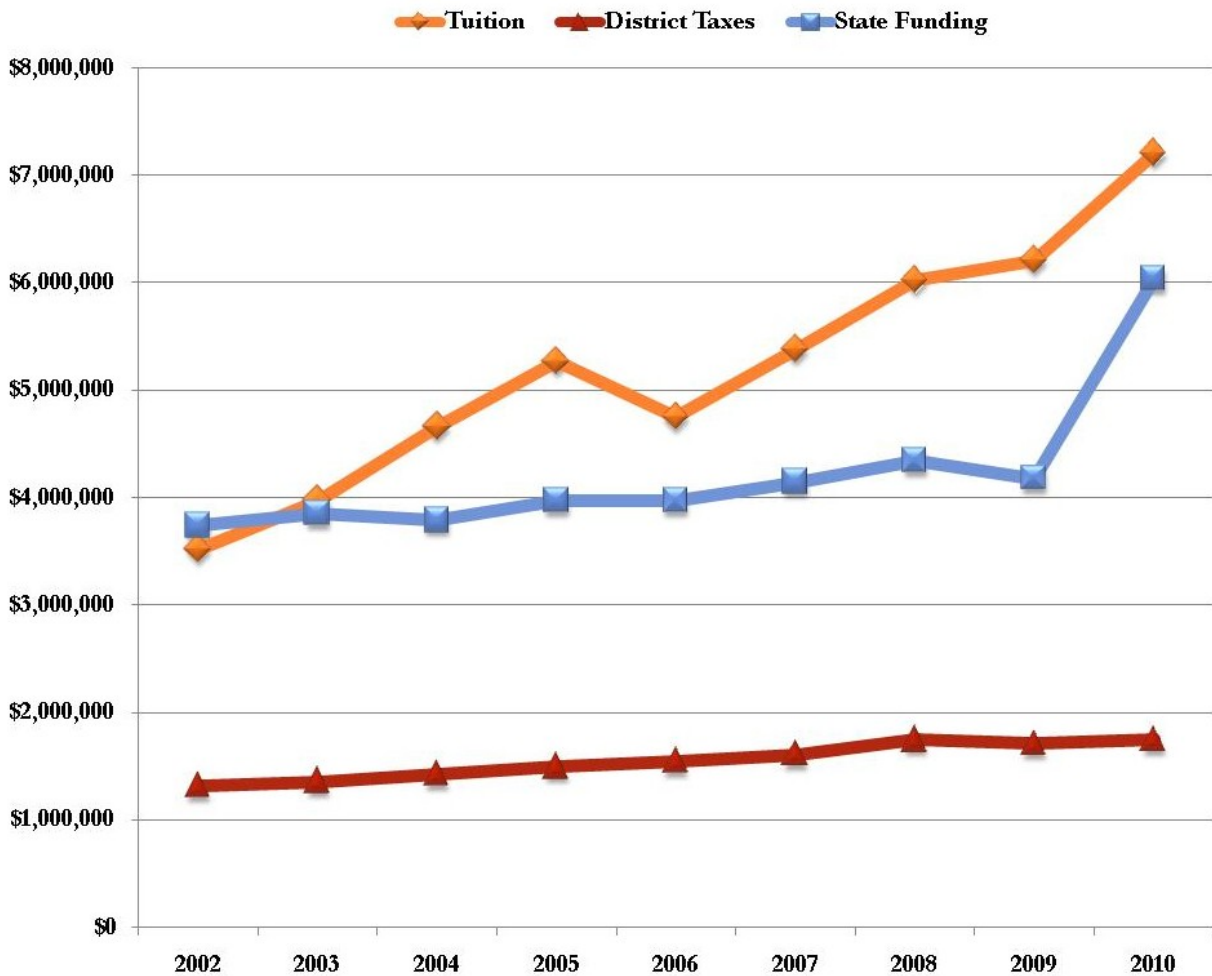
Out-of-District Counties

All of Missouri Counties  
  
Clay and Randolph  
Counties in Arkansas

## 2010 Estimated Revenue



# Revenue Comparison



	2002	2003	2004	2005	2006	2007	2008	2009	2010
Tuition	\$3,518,830	\$3,973,962	\$4,657,629	\$5,265,464	\$4,747,277	\$5,377,756	\$6,021,377	\$6,209,088	\$7,201,891
State Funding	\$3,737,883	\$3,849,349	\$3,785,282	\$3,971,293	\$3,971,293	\$4,144,078	\$4,341,464	\$4,177,547	\$6,034,819
District Taxes	\$1,314,313	\$1,357,797	\$1,426,225	\$1,491,083	\$1,544,837	\$1,606,914	\$1,744,074	\$1,709,498	\$1,746,246



2080 Three Rivers BLVD  
Poplar Bluff, Missouri 63901  
1.877.TRY.TRCC  
[www. trcc.edu](http://www.trcc.edu)

**Melanie Hamann**  
**Assistant System Administrator/  
Institutional Researcher**  
**573.840.9767**  
**[mhamann@trcc.edu](mailto:mhamann@trcc.edu)**