



THREE RIVERS COLLEGE
FACTBOOK 2012

Three Rivers College
THE COMMUNITY COLLEGE OF SOUTHEAST MISSOURI

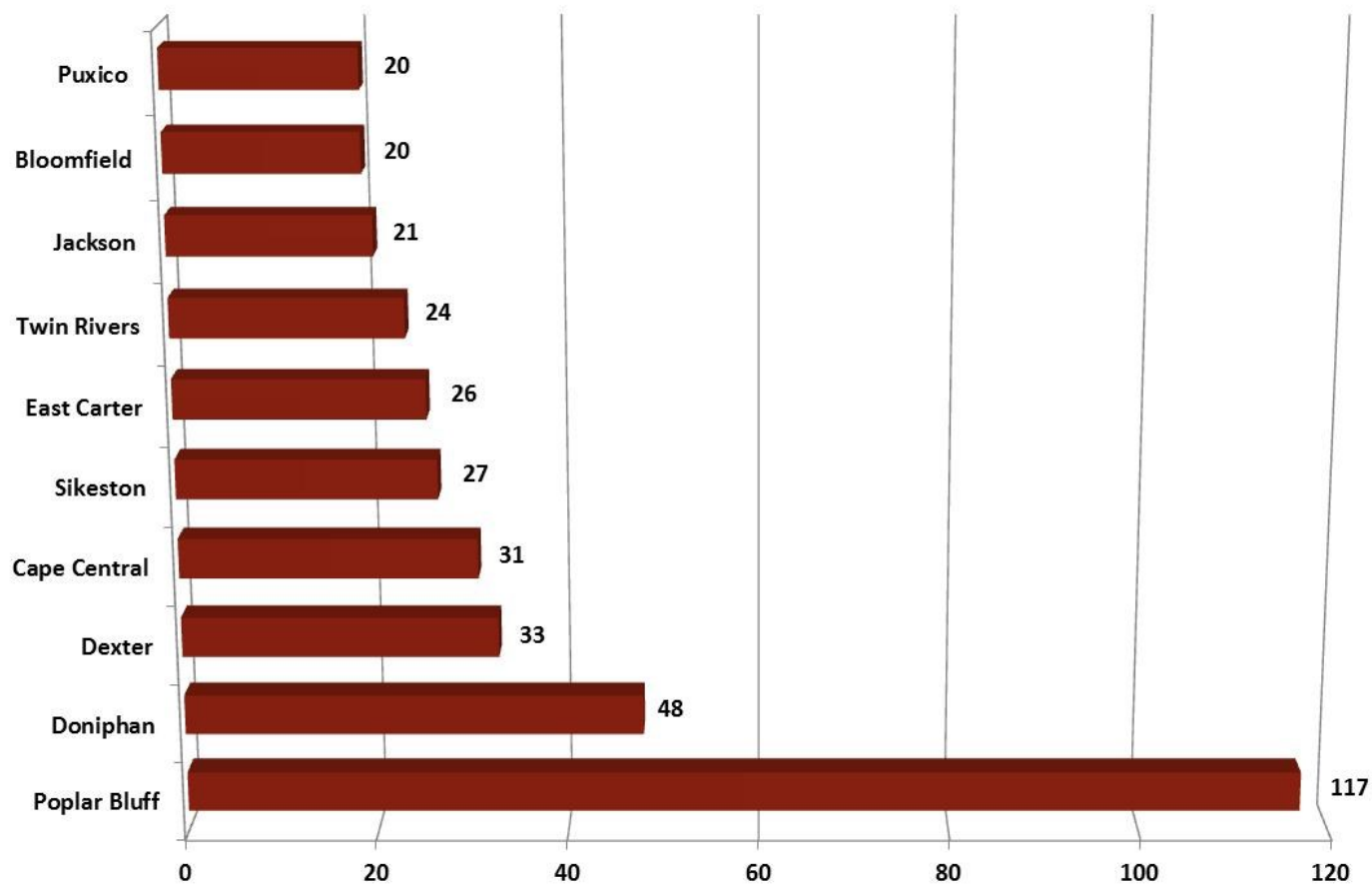
TABLE OF CONTENTS

Enrollment of Recent High School Graduates	
Top 10 High Schools Headcount	3
In-District High Schools Headcount	4
Out-of-District High Schools Headcount	5
In-District High Schools Percent	6
Out-of-District High Schools Percent	7
New Students	9
Total Student Population	
County	10
Demographics	11
Headcount and FTE	12
Enrollment Status	13
Class Level	14
Credit Hours	
Total	15
Off Campus Centers	16
ITV	17
Web	18
Day/Evening	19
Dual Credit	20
Census Comparison	21
Placement Scores	22
Students by Major	23
Financial Aid	
Percentage Students Receiving Aid	27
Total Aid Awarded	28
Retention	29
Student Achievement	30
Dean's List.....	31
Honors	35
Degrees/Certificates	
Contact Information	36
Human Resources	37
Full-Time Employees	38
Part-Time Employees	
Tuition	39
Revenue	40
2013 Estimates	41

RECENT HIGH SCHOOL GRADUATES

TOP 10 HIGH SCHOOLS

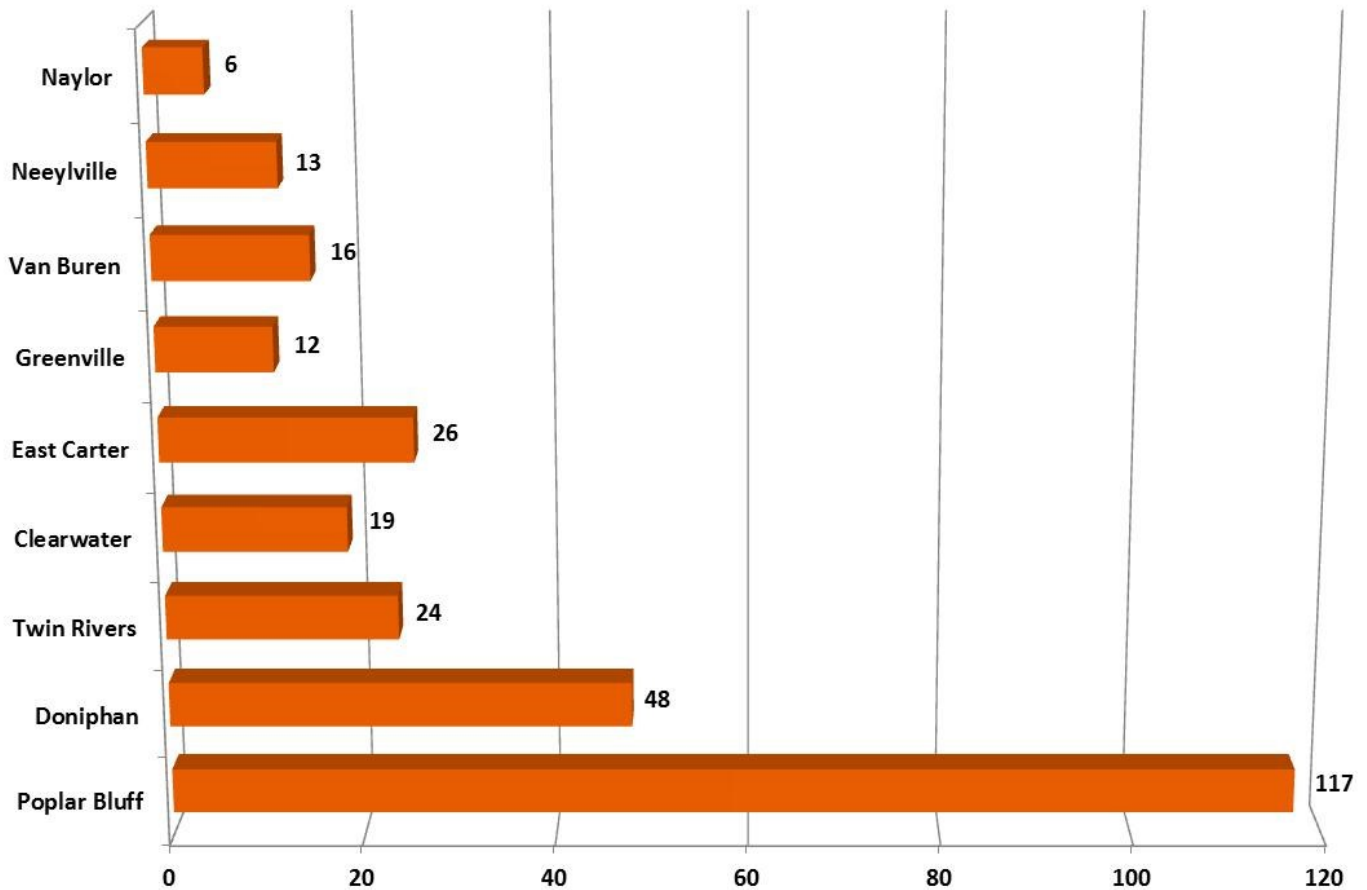
Enrollment by Headcount



May 2012 High School Graduates Enrolled in 12/Fall by High School

RECENT HIGH SCHOOL GRADUATES IN-DISTRICT HIGH SCHOOLS

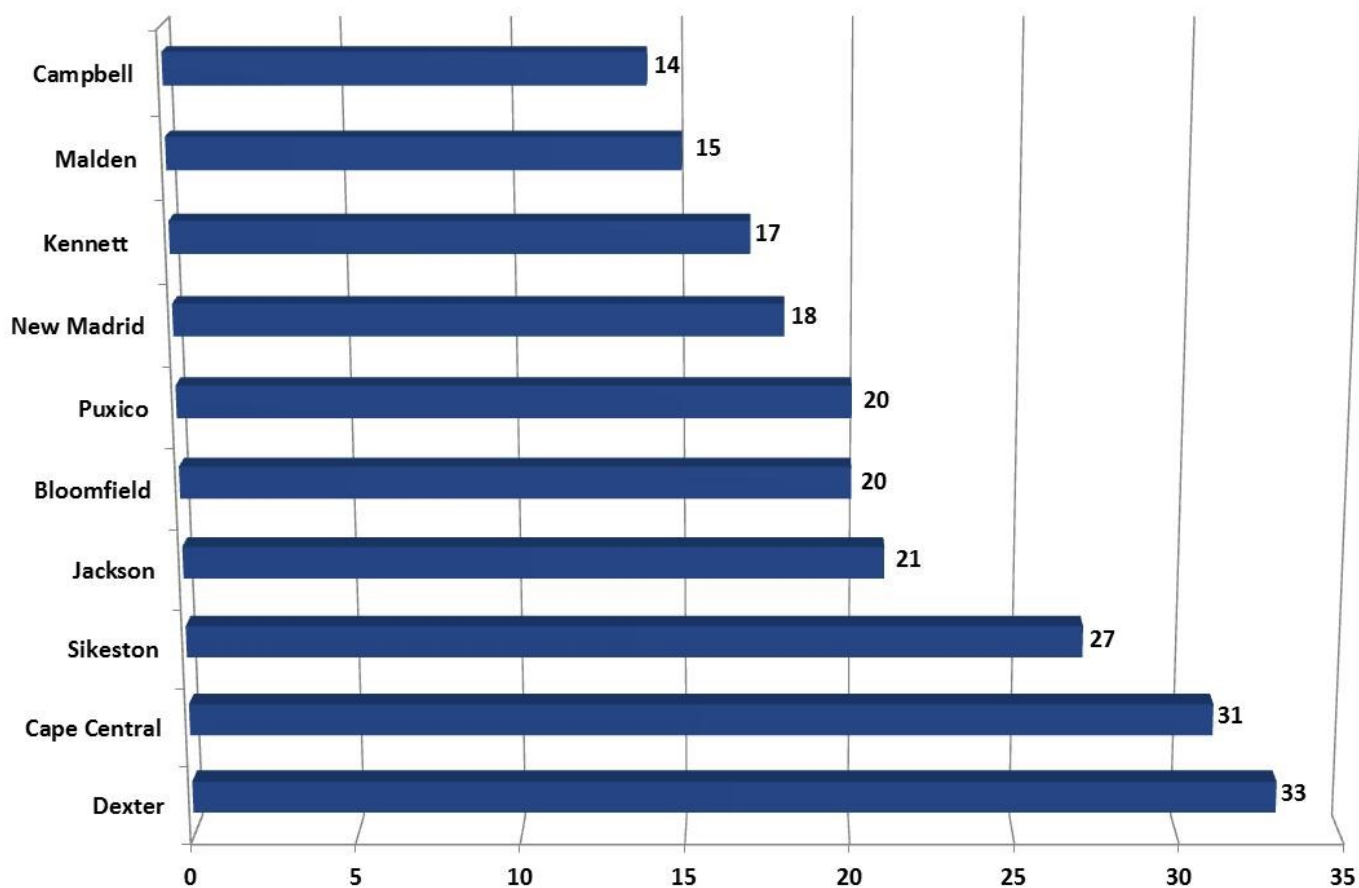
Enrollment by Headcount



May 2012 High School Graduates Enrolled in 12/Fall by High School

RECENT HIGH SCHOOL GRADUATES OUT-OF-DISTRICT HIGH SCHOOLS

Enrollment by Headcount



May 2012 High School Graduates Enrolled in 12/Fall by High School

RECENT HIGH SCHOOL GRADUATES

IN-DISTRICT HIGH SCHOOLS

Enrollment by Percentage of Graduating Class

High School	# of 2012 Graduates Enrolled	# of 2012 Graduates	% of 2012 Graduates Enrolled	County
Neelyville	13	32	41%	Butler
Poplar Bluff *	117	285	41%	Butler
Twin Rivers *	24	63	38%	Butler
East Carter *	26	58	45%	Carter
Van Buren	16	40	40%	Carter
Doniphan*	48	109	44%	Ripley
Naylor	6	23	26%	Ripley
Clearwater *	19	79	24%	Wayne
Greenville *	12	47	26%	Wayne

* A+ School

Percentage of May 2012 High School Graduates Enrolled in 12/Fall by High School

RECENT HIGH SCHOOL GRADUATES

OUT-OF-DISTRICT HIGH SCHOOLS

Enrollment by Percentage of Graduating Class

High School	# of 2012 Graduates Enrolled	# of 2012 Graduates	% of 2012 Graduates Enrolled	County
Leopold	3	14	21%	Bollinger
Meadow Heights *	3	41	7%	Bollinger
Woodland *	1	46	2%	Bollinger
Zalma*	6	17	35%	Bollinger
Cape Central *	31	301	10%	Cape Girardeau
Delta R-5	2	11	18%	Cape Girardeau
Jackson*	21	362	6%	Cape Girardeau
Notre Dame	4	131	3%	Cape Girardeau
Oak Ridge*	1	24	4%	Cape Girardeau
Bunker *	1	16	6%	Dent
Campbell	14	47	30%	Dunklin
Clarkton *	3	26	12%	Dunklin
Holcomb*	9	44	20%	Dunklin
Kennett *	17	102	17%	Dunklin
Malden *	15	88	17%	Dunklin
Senath-Hornersville	13	36	36%	Dunklin
West Plains *	2	236	1%	Howell
Fredericktown *	1	135	1%	Madison
Charleston *	4	62	6%	Mississippi
East Prairie*	13	74	18%	Mississippi
Gideon *	7	29	24%	New Madrid
New Madrid	18	94	19%	New Madrid
Portageville*	9	45	20%	New Madrid
Risco	5	10	50%	New Madrid

* A+ School

Percentage of May 2012 High School Graduates

Enrolled in 12/Fall by High School

RECENT HIGH SCHOOL GRADUATES

OUT-OF-DISTRICT HIGH SCHOOLS

Enrollment by Percentage of Graduating Class

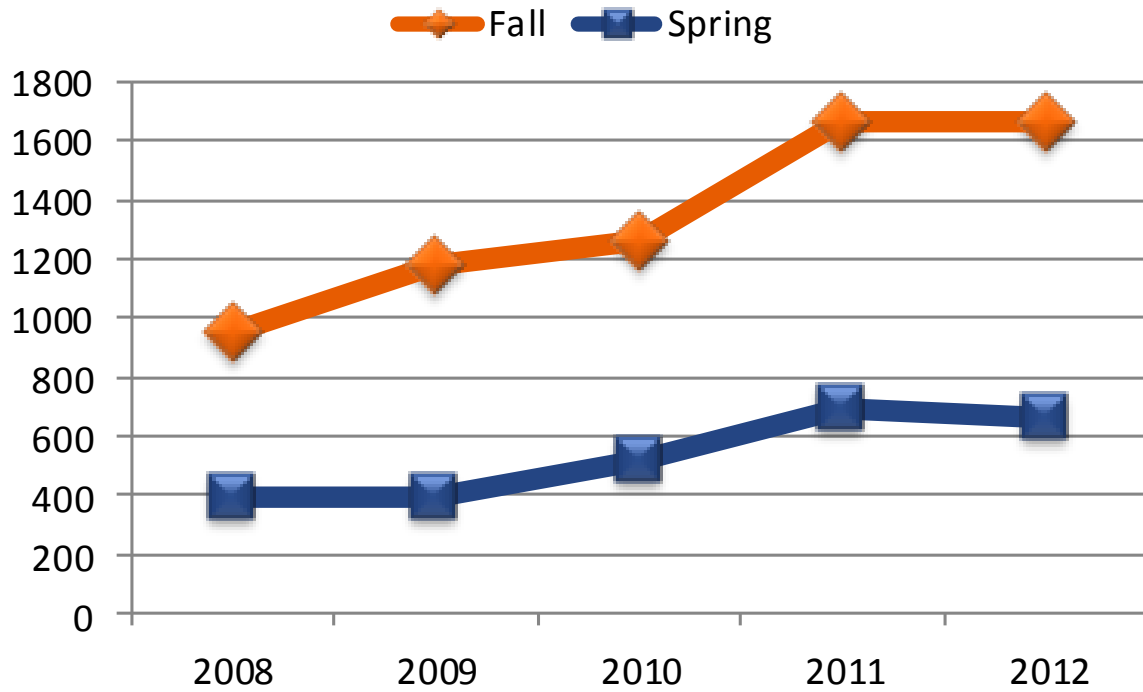
High School	# of 2012 Graduates Enrolled	# of 2012 Graduates	% of 2012 Graduates Enrolled	County
Couch *	5	30	17%	Oregon
Thayer *	2	44	5%	Oregon
Caruthersville *	8	72	11%	Pemiscot
Cooter	2	41	5%	Pemiscot
Delta C-7	1	23	4%	Pemiscot
Hayti	3	41	7%	Pemiscot
North Pemiscot	5	20	25%	Pemiscot
Lesterville	3	24	13%	Reynolds
Southern Reynolds	6	52	12%	Reynolds
Chaffee *	4	51	8%	Scott
Oran	4	39	10%	Scott
Scott City R-1	4	71	6%	Scott
Scott County Central	2	18	11%	Scott
Scott County R-4*	2	50	4%	Scott
Sikeston *	27	180	15%	Scott
Bell City *	5	18	28%	Stoddard
Bernie *	9	35	26%	Stoddard
Bloomfield *	20	48	42%	Stoddard
Dexter*	33	132	25%	Stoddard
Puxico *	20	42	48%	Stoddard
Richland *	3	20	15%	Stoddard

* A+ School

Percentage of May 2012 High School Graduates
enrolled in 12/Fall by High School

NEW STUDENTS

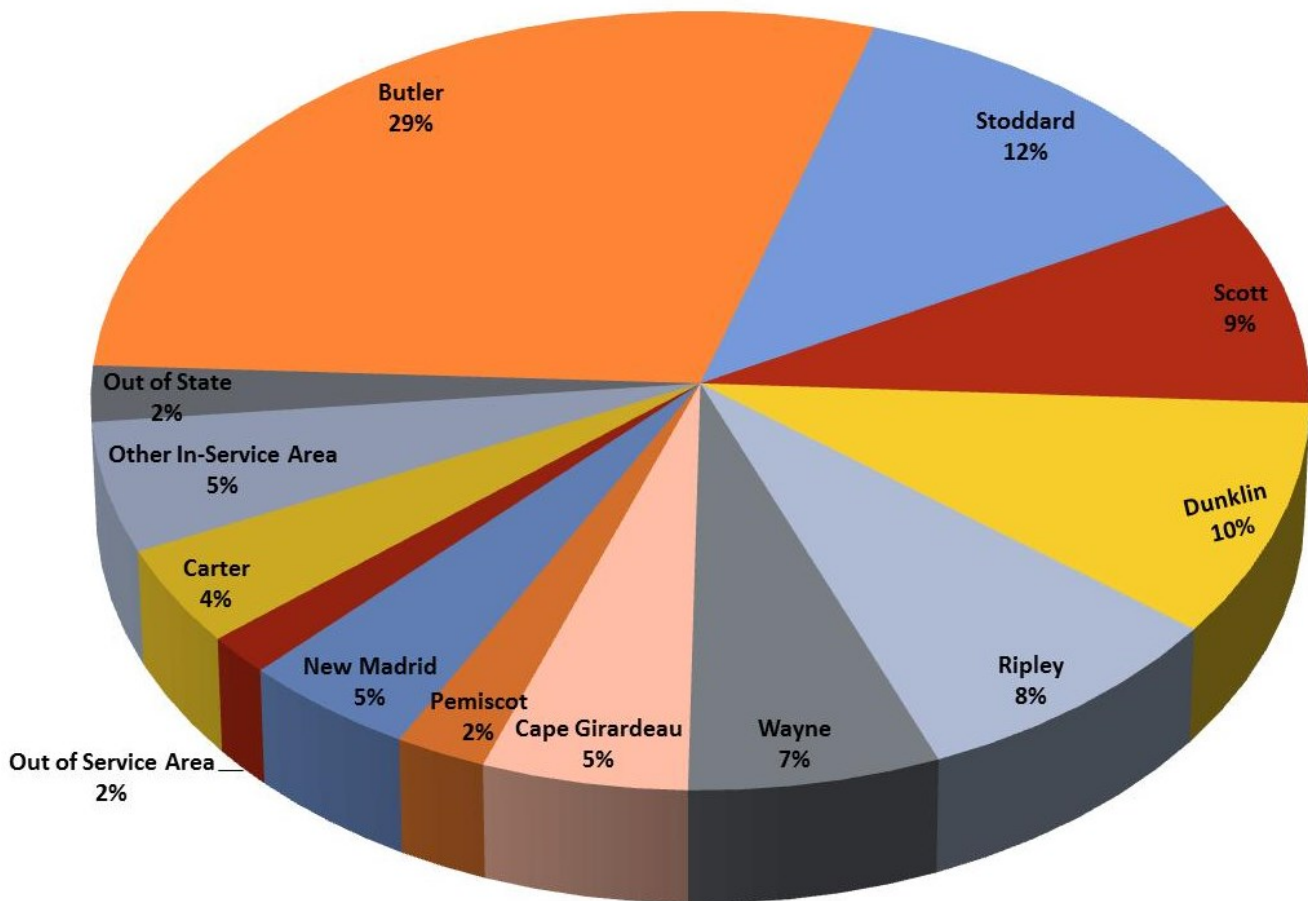
NUMBER OF NEW STUDENTS BY TERM



	2008	2009	2010	2011	2012
Fall	1042	1297	1394	1668	1669
Spring	394	395	531	553	661

TOTAL STUDENT POPULATION

12/FALL STUDENTS BY COUNTY



County	Headcount
Butler	1353
Cape Girardeau	244
Carter	188
Dunklin	453
New Madrid	207
Pemiscot	108
Ripley	388

County	Headcount
Scott	398
Stoddard	578
Wayne	299
Other in Service Area	251
Out of Service Area	77
Out of State	108

TOTAL STUDENT POPULATION

DEMOGRAPHICS

Gender of Students

Gender	2008 Fall		2009 Fall		2010 Fall		2011 Fall		2012 Fall	
Female	2073	66.44%	2313	65.45%	2456	65.81%	2783	65.71%	3093	66.49%
Male	1047	33.56%	1221	34.55%	1276	34.19%	1452	34.29%	1559	33.51%
Total	3120	100.00%	3534	100.00%	3732	100.00%	4235	100.00%	4652	100.00%

Age of Students

Age Group	2008 Fall		2009 Fall		2010 Fall		2011 Fall		2012 Fall	
<20	1145	36.70%	1239	35.06%	1358	36.39%	1540	36.36%	1607	34.54%
20-24	748	23.97%	929	26.29%	962	25.78%	1114	26.30%	1184	25.45%
25-34	613	19.65%	734	20.77%	775	20.77%	888	20.97%	991	21.30%
35+	614	19.68%	632	17.88%	637	17.07%	693	16.36%	870	18.70%
Total	3120	100.00%	3534	100.00%	3732	100.00%	4235	100.00%	4652	100.00%
Average Age	26		26		26		25		26	

Student Ethnicity and Race

Ethnicity	2008 Fall		2009 Fall		2010 Fall		2011 Fall		2012 Fall	
American Indian/ Alaska Native	14	0.45%	17	0.48%	17	0.46%	18	0.43%	29	0.62%
Asian	16	0.51%	14	0.40%	12	0.32%	11	0.26%	17	0.37%
Black	261	8.37%	317	8.97%	399	10.69%	463	10.93%	536	11.52%
Hawaiian/Pacific Islander	0	0.00%	0	0.00%	2	0.05%	1	0.02%	3	0.06%
Hispanic	46	1.47%	43	1.22%	57	1.53%	51	1.20%	63	1.35%
White	2751	88.17%	3116	88.17%	3235	86.68%	3654	86.28%	3944	84.78%
Non-Resident Alien	0	0.00%	0	0.00%	0	0.00%	0	0.00%	3	0.06%
Unknown	32	1.03%	27	0.76%	10	0.27%	37	0.87%	57	1.23%
Total	3120	100.00%	3534	100.00%	3732	100.00%	4235	100.00%	4652	100.00%

TOTAL STUDENT POPULATION

HEADCOUNT—CREDIT HOURS—FTE

School Term	Headcount	Credit Hours	FTE	Unduplicated Headcount	Annual FTE
2012-2013					
12/Augmester	73	234			
12/Fall	4,652	48,503	3,234		
13/Winter	NA	NA			
13/Spring	NA	NA			
13/Maymester	NA	NA			
13/Summer	NA	NA			
Total		Incomplete		Incomplete	Incomplete
2011-2012					
11/Augmester	43	69			
11/Fall	4,235	44,248	2,950		
12/Winter	404	1,499			
12/Spring	4,225	42,665			
12/Maymester	31	80			
12/Summer	1318	7,817			
Total		96,378		5,968	3,213
2010-2011					
10/Fall	3,732	40,413	2,694		
11/Winter	288	1,171			
11/Spring	3,635	37,658			
11/Maymester	43	131			
11/Summer	1,536	9,973			
Total		89,346		5,274	2,978
2009-2010					
09/Fall	3,534	37,519	2,501		
10/Winter	313	1,223			
10/Spring	3,473	36,219			
10/Summer	1,438	9,061			
Total		84,022		5,141	2,801
2008-2009					
08/Fall	3,120	33,191	2,213		
09/Winter	260	932			
09/Spring	3,023	31,659			
09/Summer	1,169	6,963			
Total		72,745		4,472	2,425

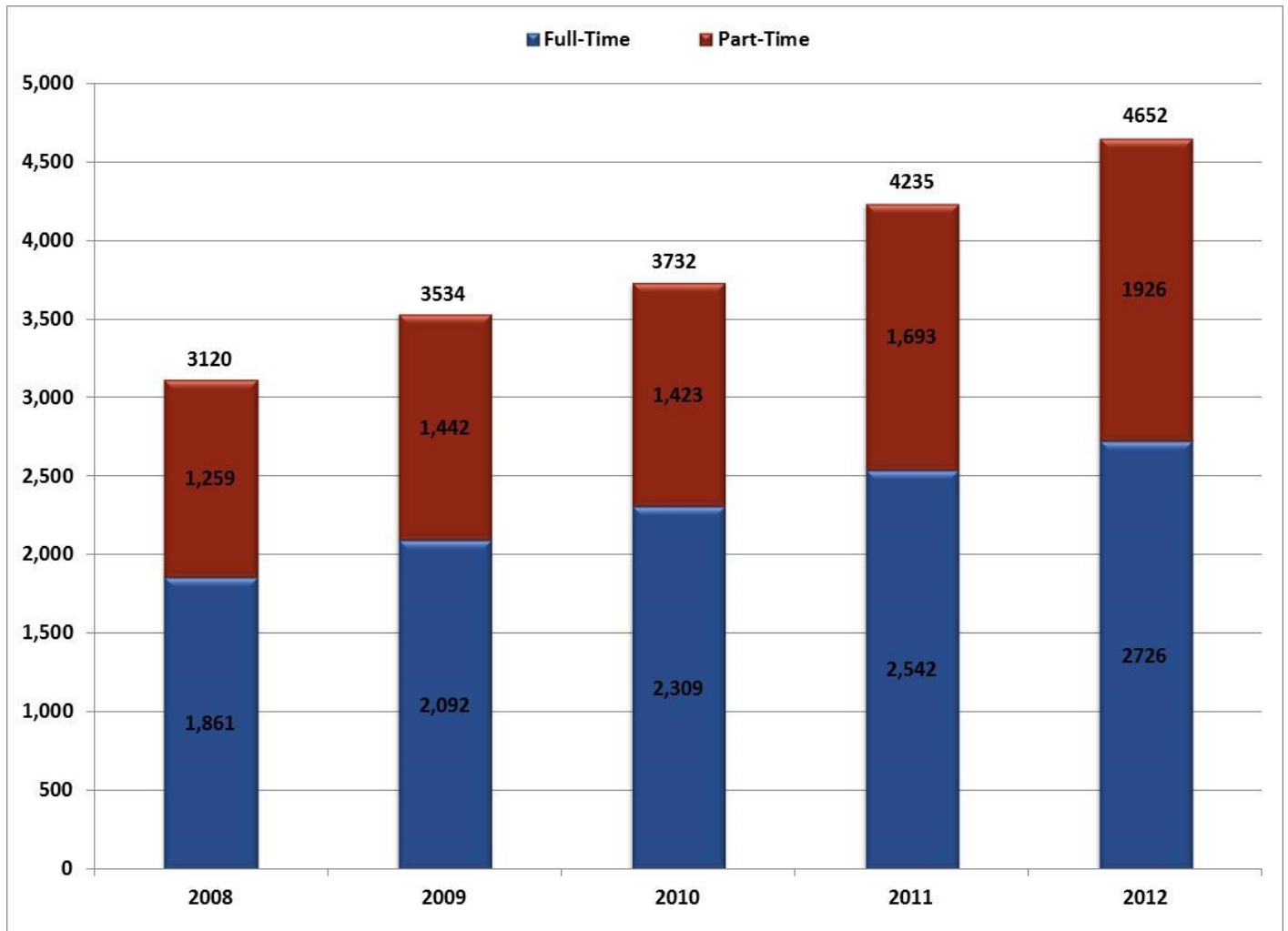
Fall FTE is derived by dividing the total term hours by 15.

Annual FTE is calculated as the total hours divided by 30.

Figures in this table differ from IPEDS and DHE Reporting in that these numbers include "auditing" students.

TOTAL STUDENT POPULATION

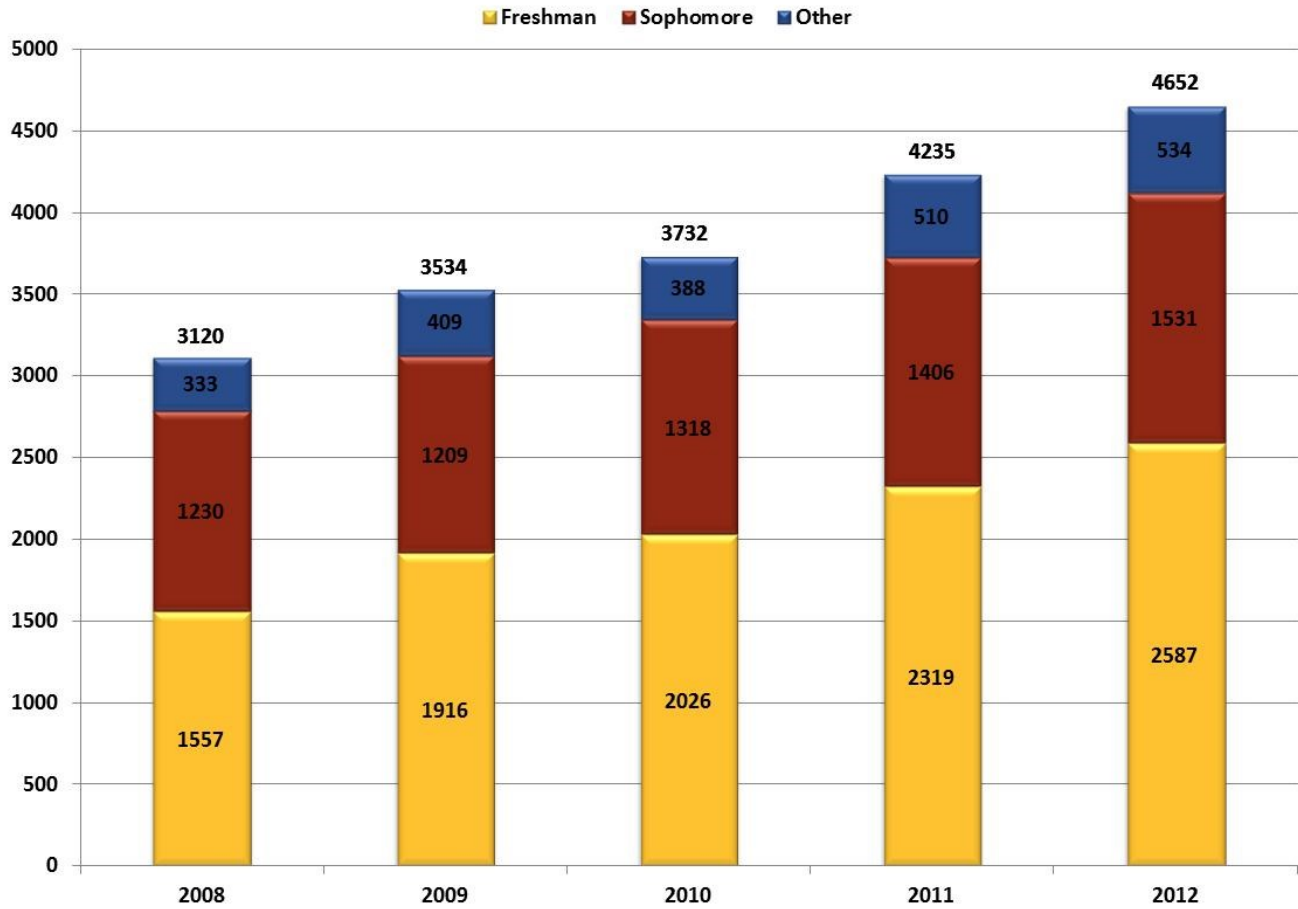
ENROLLMENT STATUS



Year	Full-Time		Part-Time		Total Headcount
2008	1,861	59.65%	1,259	40.35%	3,120
2009	2,092	59.20%	1,442	40.80%	3,534
2010	2,309	61.87%	1,423	38.13%	3,732
2011	1,693	39.98%	2,542	60.02%	4,235
2012	2,726	58.60%	1,926	41.40%	4,652

TOTAL STUDENT POPULATION

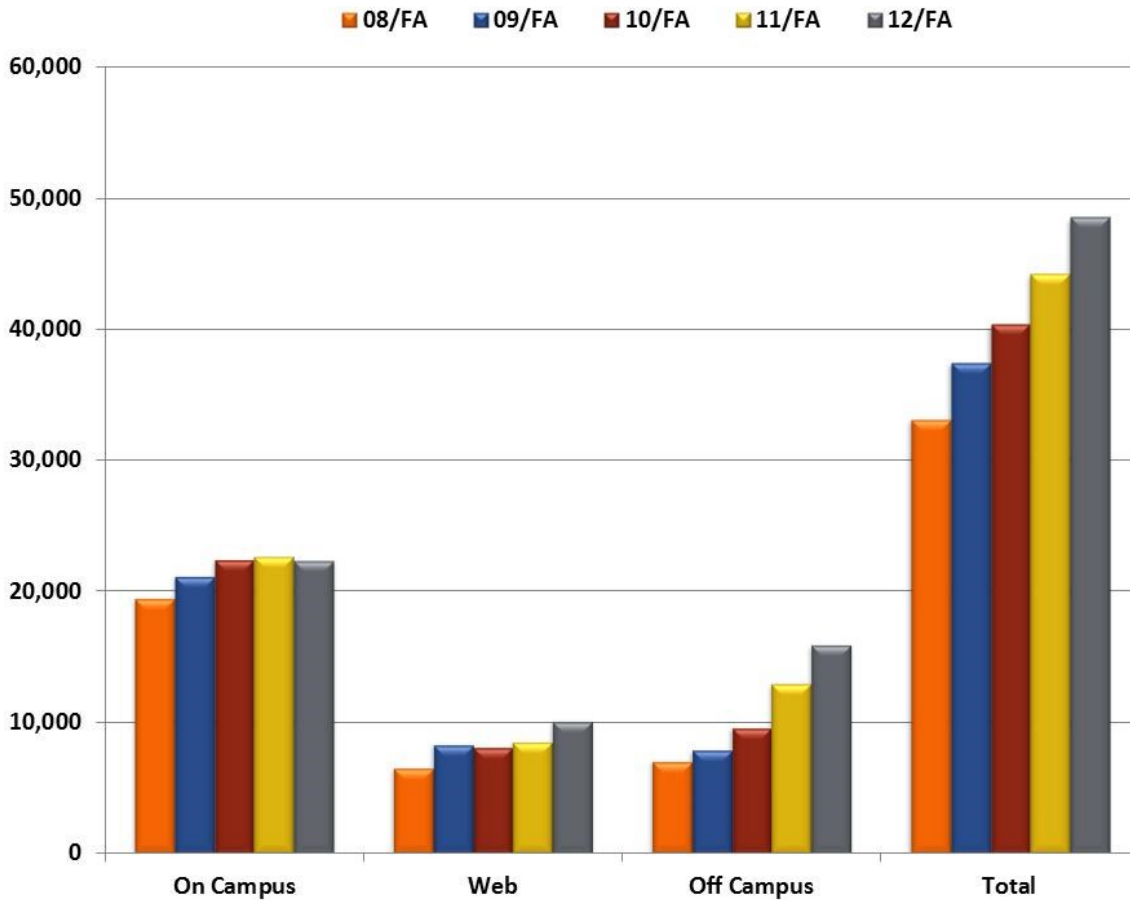
CLASS LEVEL



Year	Freshman		Sophomores		Other		Total Headcount
2008	1,557	49.90%	1,230	39.42%	333	10.67%	3,120
2009	1,916	54.22%	1,209	34.21%	409	11.57%	3,534
2010	2,026	54.29%	1,318	35.32%	388	10.40%	3,732
2011	2,319	54.76%	1,406	33.20%	510	12.04%	4,235
2012	2,587	55.61%	1,531	32.91%	534	11.48%	4,652

CREDIT HOURS FOR FALL SESSIONS

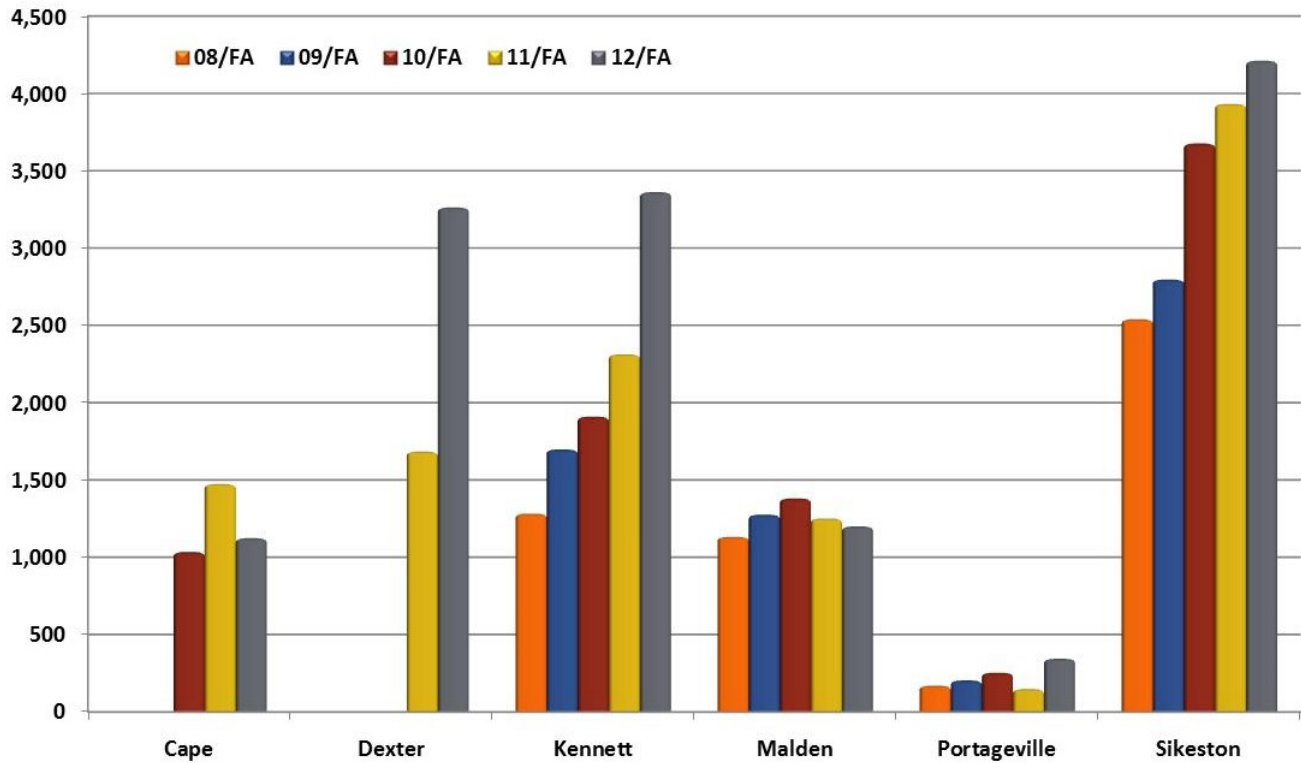
TOTAL CREDIT HOURS



	On Campus	Web	Off Campus	Total
08/FA	19,501	6,568	7,122	33,191
09/FA	21,191	8,391	7,937	37,519
10/FA	22,515	8,213	9,685	40,413
11/FA	22,637	8,560	13,051	44,248
12/FA	22,409	10,162	15,932	48,503

CREDIT HOURS FOR FALL SESSIONS

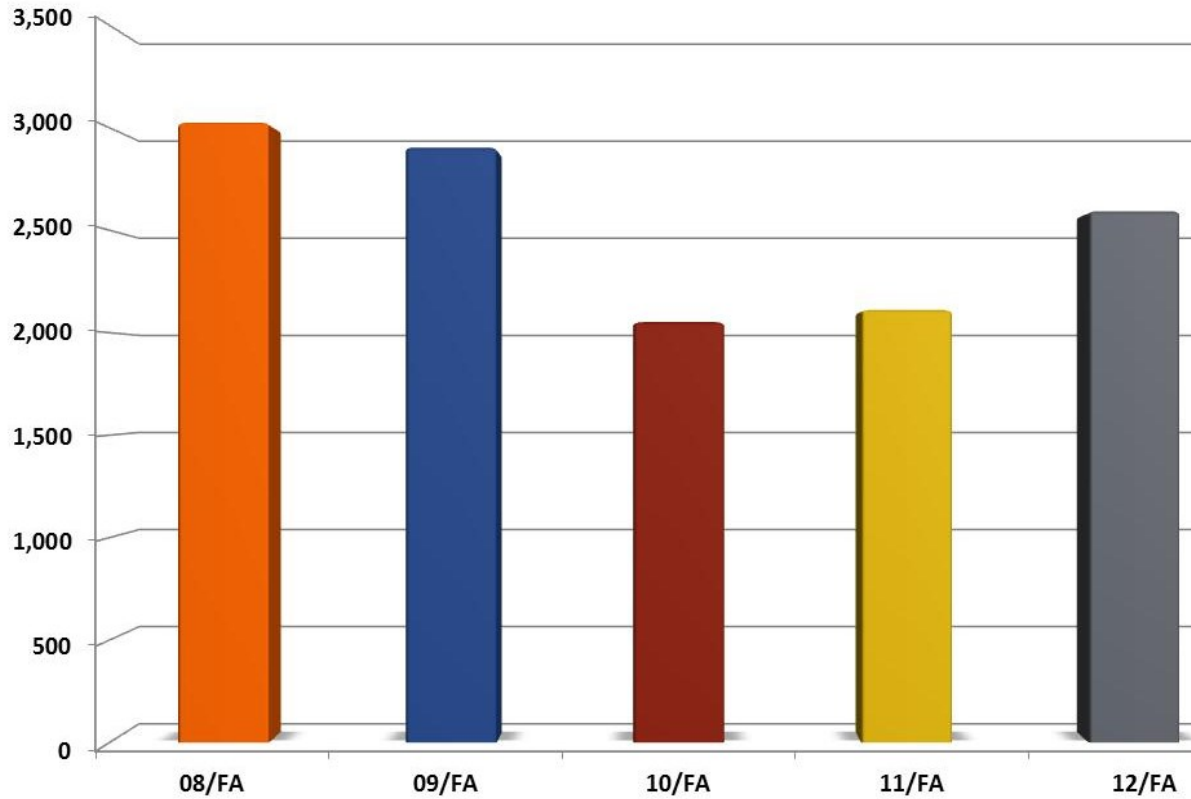
OFF-CAMPUS CENTERS



	CGPHE	Dexter	Kennett	Malden	Portageville	Sikeston
08/FA			1,282	1,131	169	2,539
09/FA			1,697	1,275	203	2,796
10/FA	1,034		1,909	1,380	253	3,676
11/FA	1,473	1,683	2,312	1,251	147	3,931
12/FA	1,123	3,262	3,361	1,199	343	4,211

CREDIT HOURS FOR FALL SESSIONS

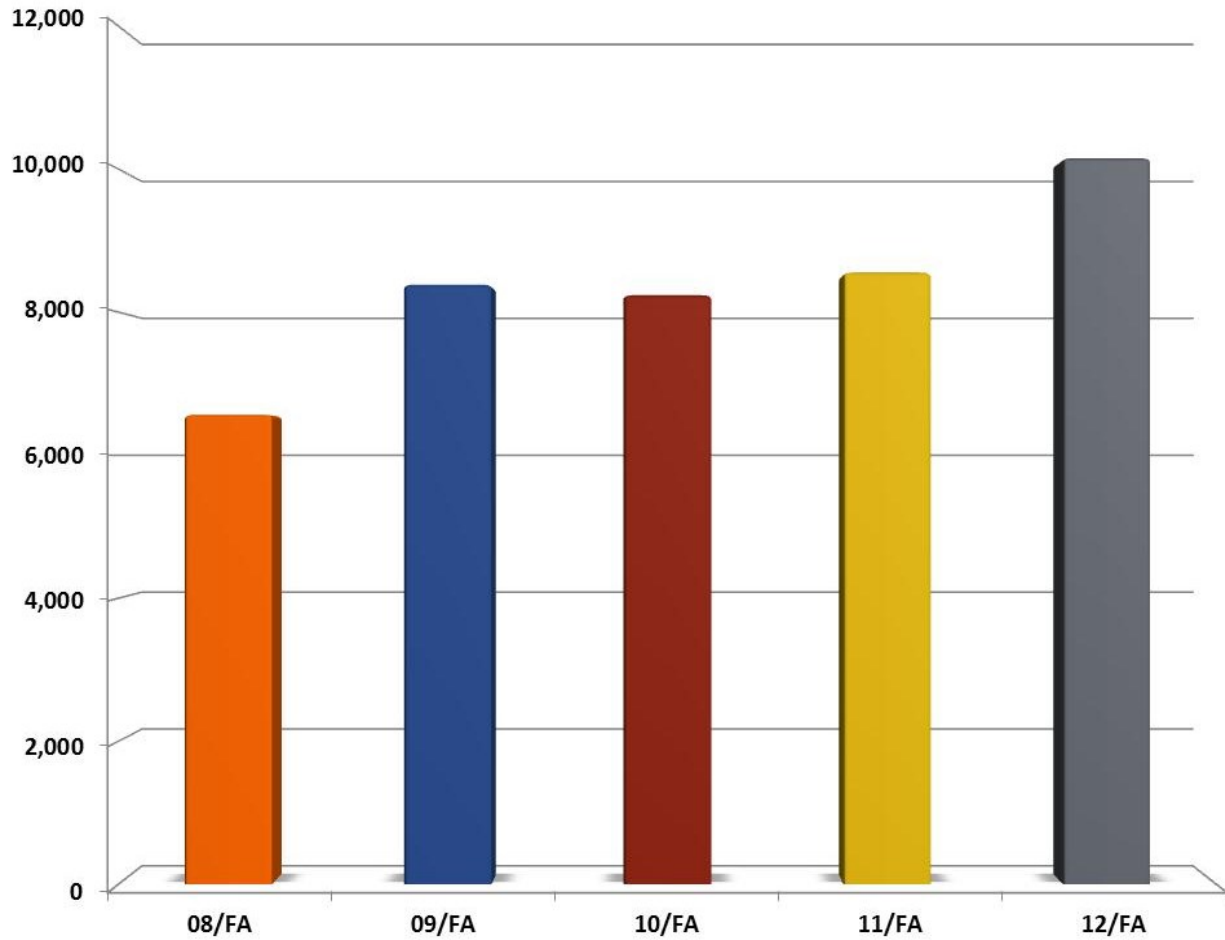
ITV COURSES



	08/FA	09/FA	10/FA	11/FA	12/FA
Credit Hours	3,028	2,907	2,053	2,112	2,595
Sections Offered	169	134	108	122	141

CREDIT HOURS FOR FALL SESSIONS

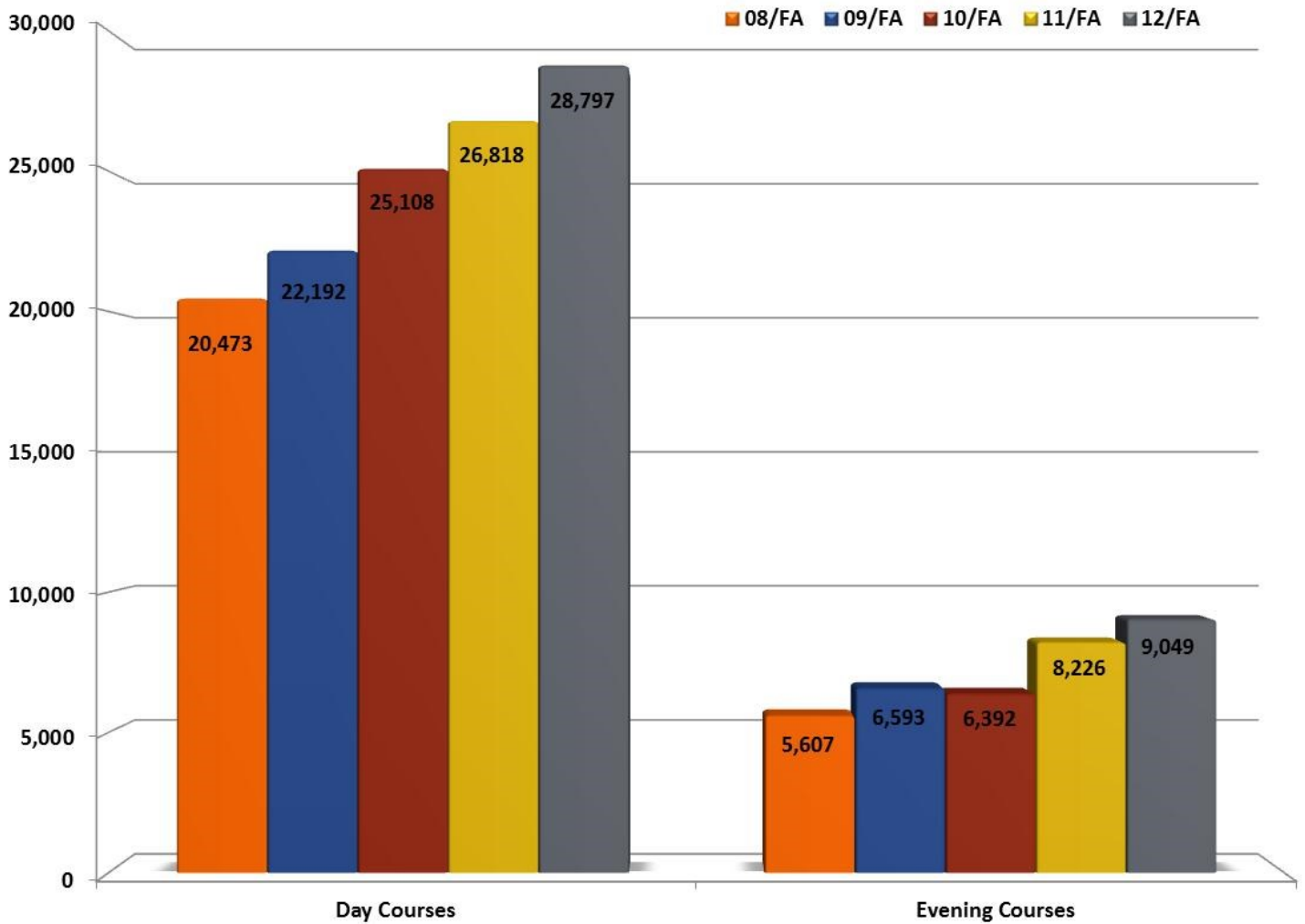
WEB COURSES



	08/FA	09/FA	10/FA	11/FA	12/FA
Credit Hours	6,568	8,391	8,243	8,560	10,162
Sections Offered	96	107	103	110	126

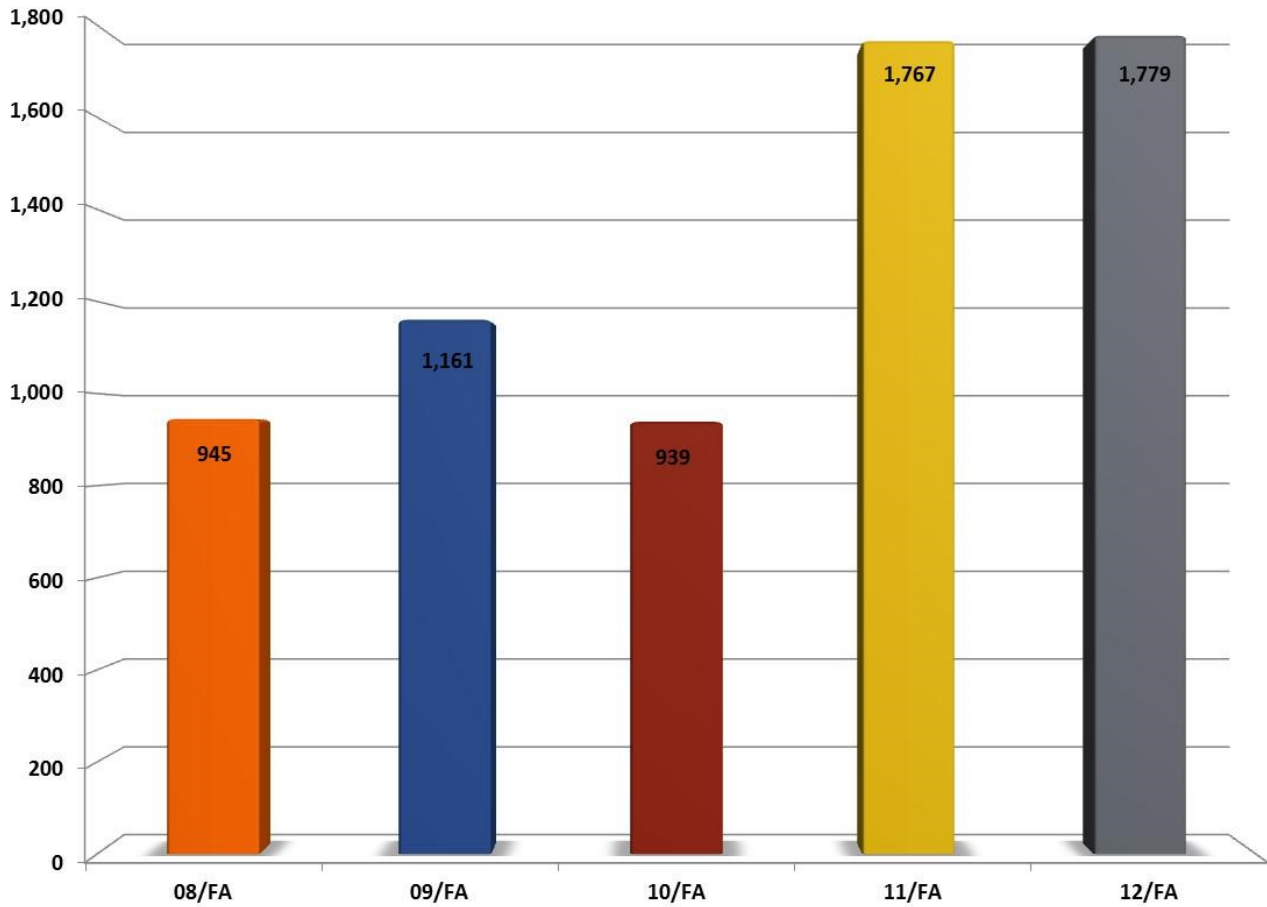
CREDIT HOURS FOR FALL SESSIONS

DAY/EVENING COURSES



CREDIT HOURS FOR FALL SESSIONS

DUAL CREDIT COURSES



	08/FA	09/FA	10/FA	11/FA	12/FA
Credit Hours	945	1,161	939	1,767	1,779

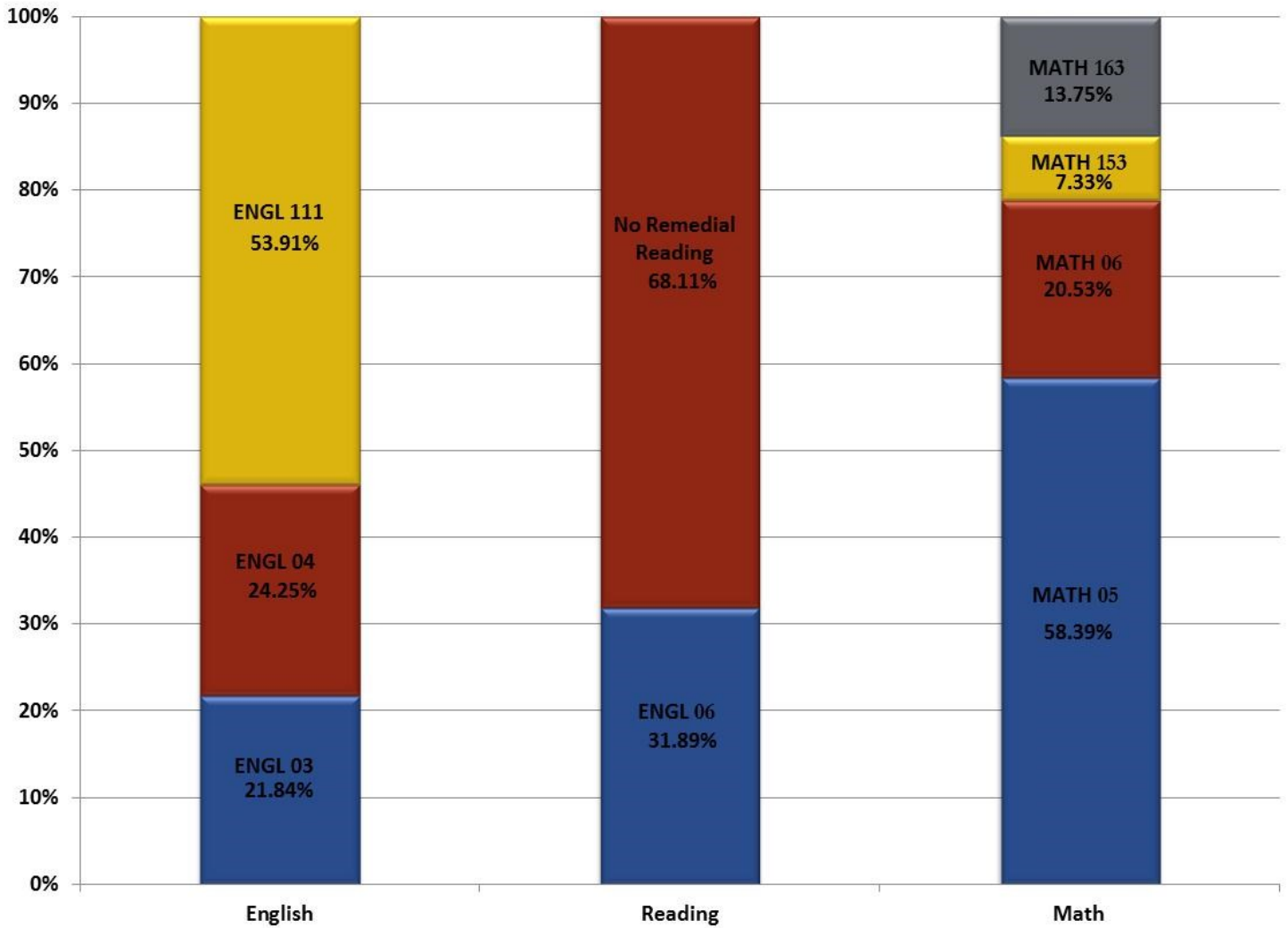
CENSUS COMPARISONS

PERCENTAGE CHANGE IN CREDIT HOURS

	Percentage Change in Credit Hours 07/Fall to 08/Fall	Percentage Change in Credit Hours 08/Fall to 09/Fall	Percentage Change in Credit Hours 09/Fall to 10/Fall	Percentage Change in Credit Hours 10/Fall to 11/Fall	Percentage Change in Credit Hours 11/Fall to 12/Fall
<u>ON-CAMPUS</u>					
Regular On-Campus	-10.55%	9.57%	7.67%	1.73%	-2.26%
ITV-on campus	24.63%	-5.43%	-19.37%	-27.92%	41.67%
<u>TOTAL ON-CAMPUS</u>	-9.00%	8.67%	6.25%	0.54%	-1.01%
<u>TOTAL WEB COURSES</u>	20.69%	27.76%	-2.12%	4.23%	18.71%
<u>OFF-CAMPUS</u>					
<u>Out of District Locations</u>					
CGPHE Partnership			100.00%	42.46%	-23.76%
Center at Dexter				100.00%	93.82%
Center at Kennett	1.34%	32.37%	12.49%	21.11%	45.37%
Center at Malden	-16.35%	12.73%	8.24%	-9.35%	-4.16%
Center at Portageville	-17.56%	20.12%	24.63%	-41.90%	133.33%
Center at Sikeston	1.36%	10.12%	31.47%	6.94%	7.12%
Other Out of District	-14.29%	-11.96%	-33.74%	32.26%	71.43%
<u>In-District Locations</u>					
Center at Doniphan	24.63%	5.31%	-38.66%	141.10%	-30.68%
Center at Piedmont	-41.54%	-21.05%	-83.33%	1260.00%	-27.94%
Center at Van Buren	0.00%	33.33%	-5.88%	14.06%	1.37%
Poplar Bluff High	-2.50%	38.46%	-20.37%	82.56%	-13.38%
Other In District	11.20%	-19.42%	-6.25%	-18.10%	18.60%
<u>TOTAL OFF CAMPUS</u>	-4.15%	11.44%	22.02%	34.75%	22.07%
<u>TOTAL REGISTERED</u>	-3.24%	13.04%	7.71%	9.49%	9.62%

PLACEMENT SCORES

12/FALL FIRST-TIME STUDENTS



STUDENTS BY MAJOR

12/FALL STUDENTS BY ACADEMIC PROGRAM

Program	Students
Accounting Certificate	6
Accounting Technology	40
Administration of Justice	79
Agribusiness	8
Agriculture	47
Agritechnology	7
Applied Technology	3
Arts	17
Biology	17
Business Administration	247
Business Education	4
Business Management	106
Business Management Evening	4
Chemistry	4
Child Care and Guidance	2
Criminal Justice - Non-Track	136
Criminal Justice - Corrections Option	1
Criminal Justice/Police Science Certificate	2
DTEC - Auto Collision Option	3
DTEC - Auto Service Option	3
DTEC - Building Trades Option	1
DTEC - Computer Maintenance Option	8
DTEC - Culinary Arts Option	15
DTEC - Diesel Tech Option	1
DTEC - Graphic Communications Option	11
DTEC - HVAC Option	5
DTEC - Machine Tech Option	1
DTEC - Welding Option	3

STUDENTS BY MAJOR

12/FALL STUDENTS BY ACADEMIC PROGRAM

Program	Students
Early Childhood Development	96
Early Childhood Development Short-term Certificate	3
Early Childhood Education	23
Education - Elementary Education (AA)	40
Education - Elementary Education (AAT)	206
Education - Instrumental	15
Education - Middle School	3
Education - Middle School Education	15
Education - Mid-Level Elementary Arts & Social Science	1
Education - Mid-Level Elementary Math & Science	3
Education - Secondary Education	66
Education - Vocal	4
Education -Secondary	14
Electrical Technical Certificate	5
Emergency Medical Services	30
Emergency Medical Tech - Basic	2
Emergency Medical Technology-Paramedic	1
English	11
Environmental Health	2
Environmental Horticulture	1
Environmental/Occupational Safety & Health Tech Certificate	5
Environmental/Occupational Safety & Health	12
Fire Science	24
Fire Science One-Year Certificate	4
Fire Science Short-Term Certificate	2
Forensic Science	7
Forestry	14
Forestry Technology	30

STUDENTS BY MAJOR

12/FALL STUDENTS BY ACADEMIC PROGRAM

Program	Students
General Education	891
General Education - Partnership	206
Geographic Information Systems One-Year Certificate	1
Green Diesel One-Year Certificate	34
Green Diesel Short-Term Certificate	3
History	15
Hospitality and Tourism Certificate	2
Industrial Tech - Automated Manufacturing	21
Industrial Tech - Civil & Construction	19
Industrial Tech - Drafting & Manufacturing	6
Industrial Tech - Industrial Maintenance	3
Industrial Tech - Power Plant	10
Industrial Technician Certificate	1
Industrial Technician One-Year Certificate	5
Information Publishing Certificate	1
Information Systems Tech Automated Office Certificate	5
Information Systems Technology Billing & Coding	91
Information Systems Technology Executive	12
Information Systems Technology Legal	1
Information Systems Technology Medical	47
Information Systems Technology Microcomputer	20
Journalism	11
LPN/ADN Bridge Program	31
Mass Communication	14
Math	5
Medical Billing & Coding Certificate	12
Medical Lab Technology	31
Microcomputer Support Technology Certificate	2

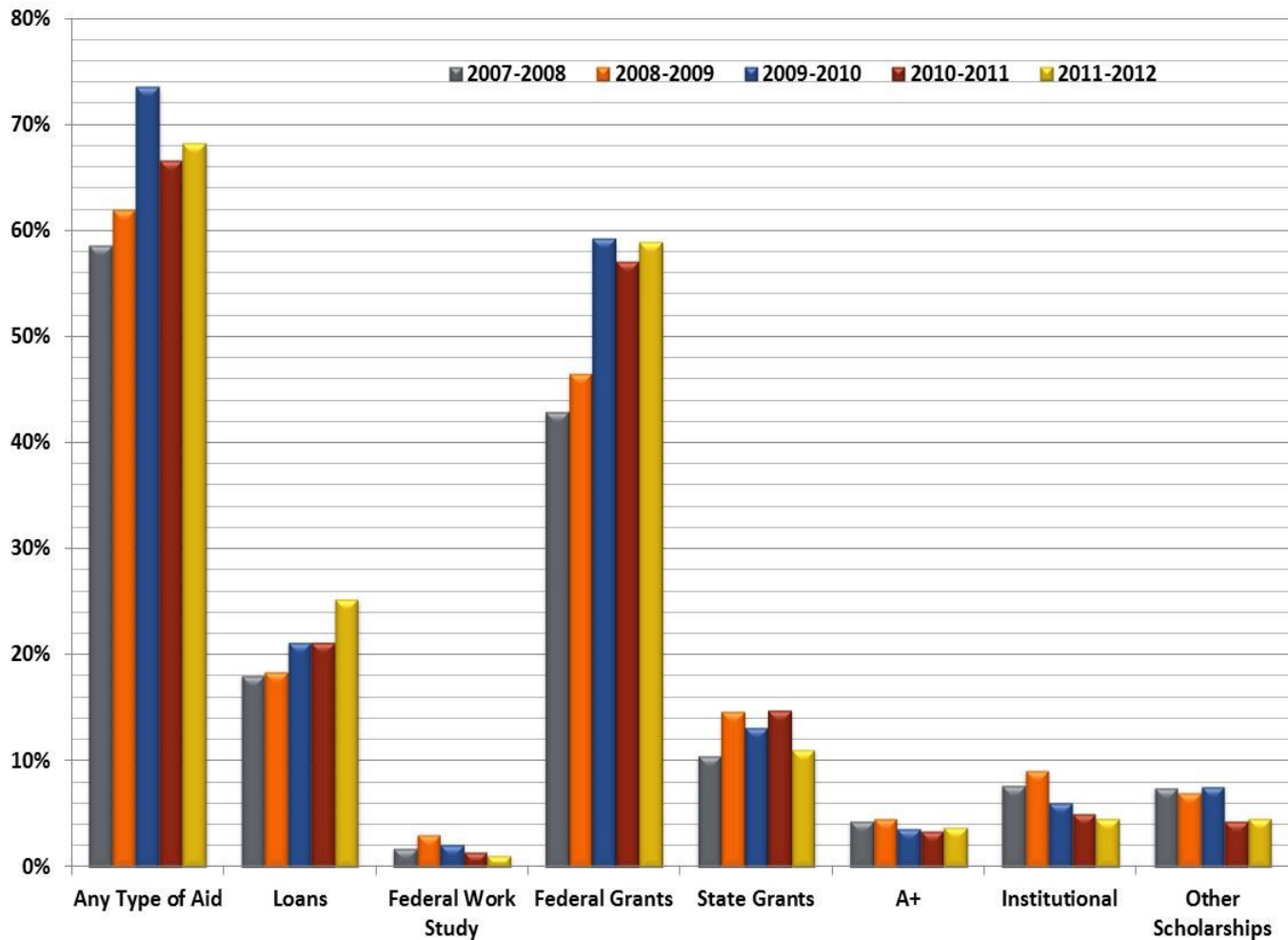
STUDENTS BY MAJOR

12/FALL STUDENTS BY ACADEMIC PROGRAM

Program	Students
Music	19
Network Administration	58
Nursing	104
Office Assistant Certificate	6
Philosophy & Religion	5
Physical Education	6
Physical Sciences	2
Political Science	3
Pre-Engineering (AA)	25
Pre-Engineering (AS)	8
Pre-Law	29
Pre-Medical Laboratory Technology	14
Pre-Medicine	20
Pre-Nursing	625
Pre-Optometry	1
Pre-Pharmacy	14
Pre-Physical Therapy Assistant One-Year Certificate	105
Pre-Sports Medicine	50
Pre-Veterinary Medicine	17
Psychology	125
Quality Control Technician Certificate	3
Sci-Paraprofessional Educator	12
Social Work Education	44
Social Work for Southeast	44
Sociology	26
Spanish	2
Speech and Theatre	8
Speech Communications	4
Surgical Technologist Certificate	2
Surveying Certificate	2

FINANCIAL AID AWARDED

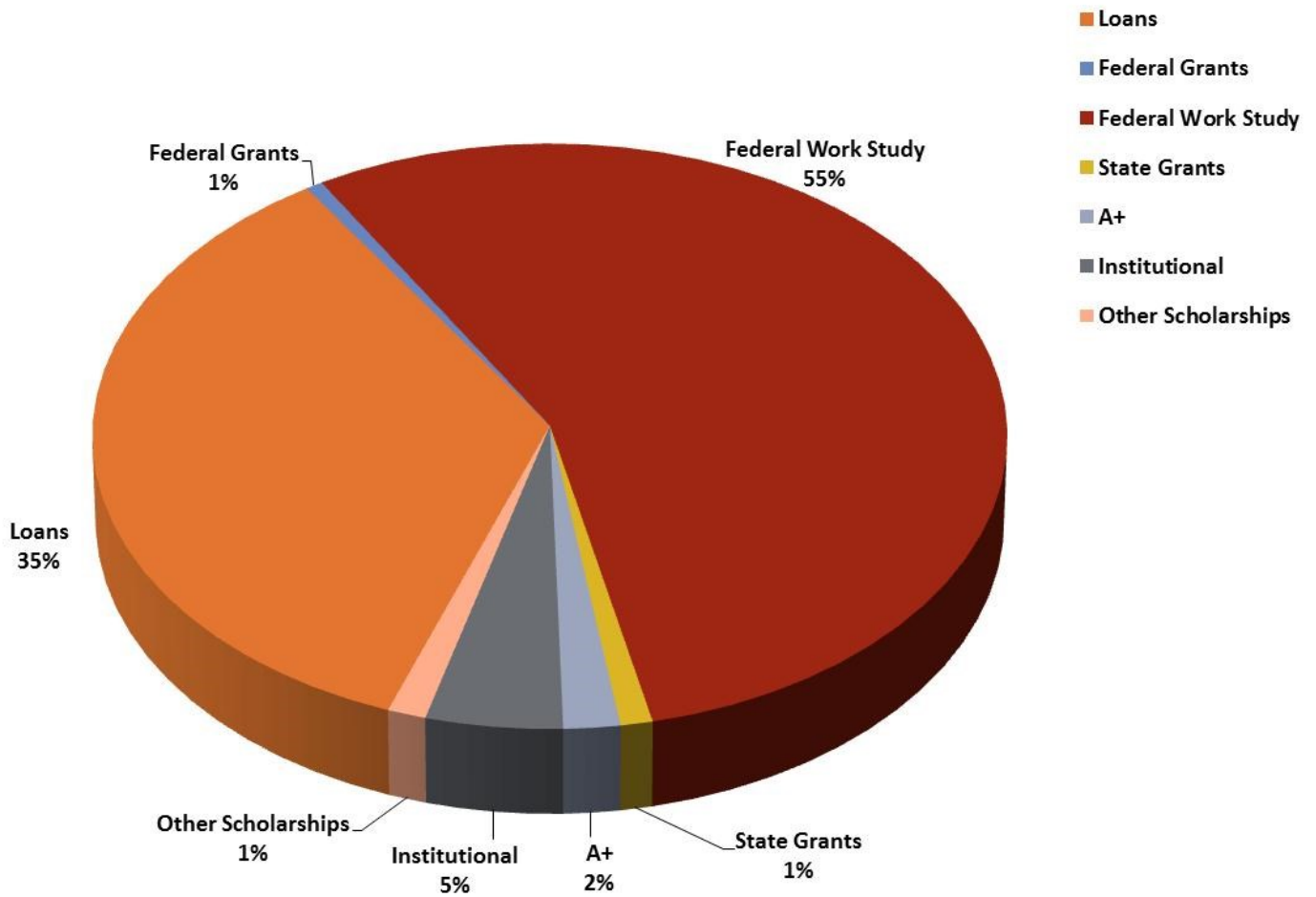
PERCENTAGE OF ALL STUDENTS RECEIVING AID



	Any Type of Aid	Loans	Federal Work Study	Federal Grants	State Grants	A+	Institutional	Other Scholarships
2007-2008	58.6%	18.1%	1.8%	42.9%	10.5%	4.4%	7.8%	7.5%
2008-2009	62.0%	18.5%	3.1%	46.5%	14.7%	4.6%	9.2%	7.1%
2009-2010	73.6%	21.2%	2.2%	59.3%	13.2%	3.7%	6.1%	7.6%
2010-2011	66.6%	21.2%	1.5%	57.1%	14.8%	3.5%	5.1%	4.4%
2011-2012	68.2%	25.3%	1.1%	58.9%	11.1%	3.8%	4.7%	4.7%

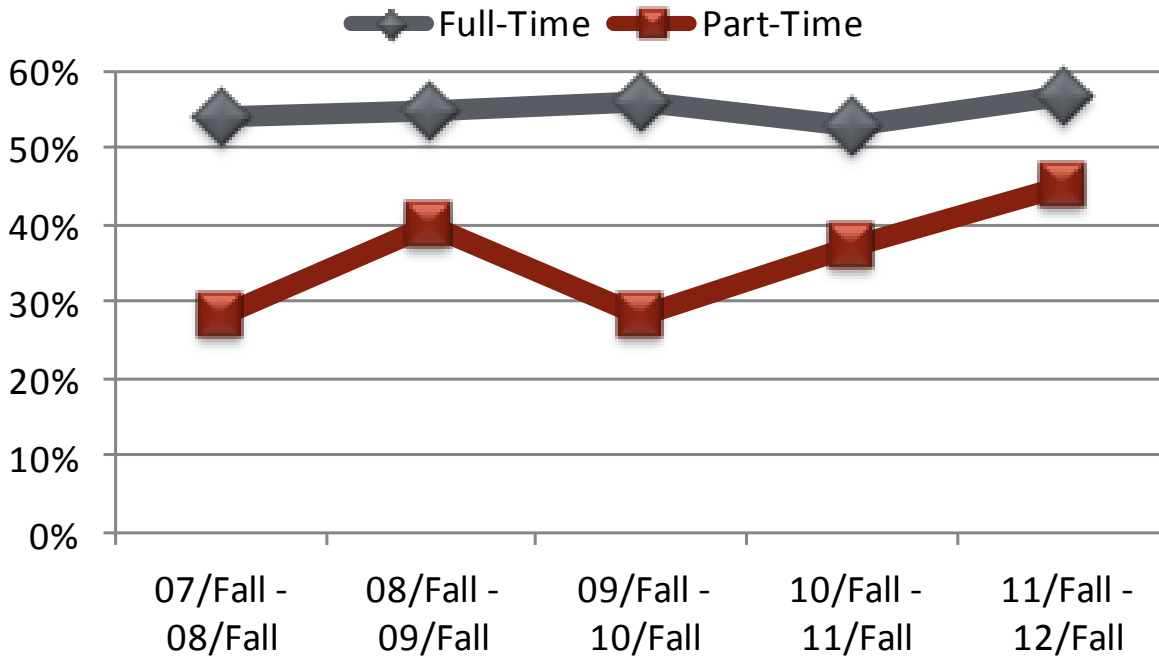
FINANCIAL AID AWARDED

PERCENTAGE OF TOTAL DOLLARS AWARDED



RETENTION RATES

FIRST-TIME STUDENT COHORT*



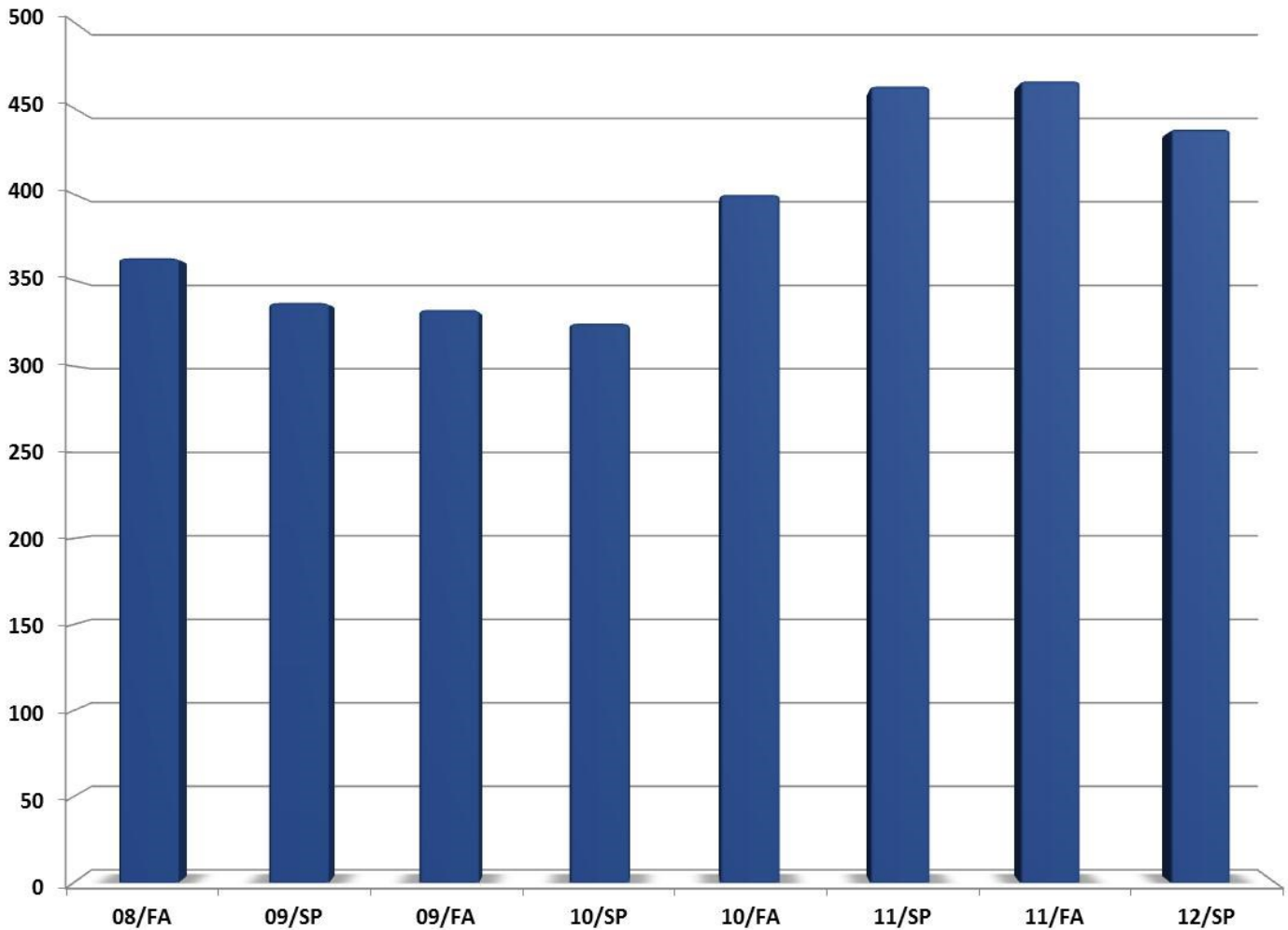
	Full-Time	Part-Time
07/Fall - 08/Fall	54%	28%
08/Fall - 09/Fall	55%	40%
09/Fall - 10/Fall	56%	28%
10/Fall - 11/Fall	53%	37%
11/Fall - 12/Fall	57%	45%

*Cohort defined by IPEDS

Only first-time students are included. Transfer students are not included.

STUDENT ACHIEVEMENT

DEAN'S LIST*

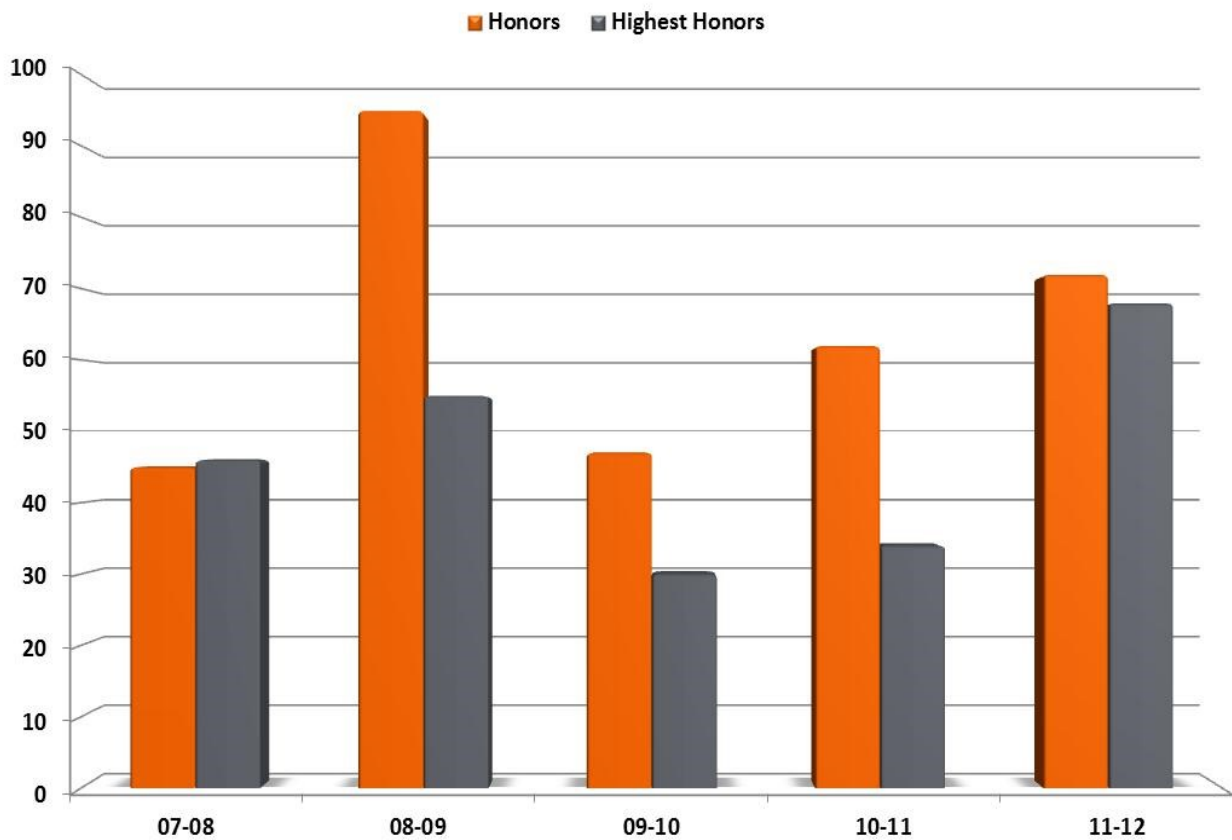


07/FA	08/SP	08/FA	09/SP	09/FA	10/SP	10/FA	11/SP	11/FA	12/SP
384	323	363	337	333	325	400	463	466	438

*Students must be enrolled in 12 or more hours and earn a GPA of 3.5 or better.

STUDENT ACHIEVEMENT

GRADUATES WITH HONORS



	07-08	08-09	09-10	10-11	11-12
Honors*	45	95	47	62	72
Highest Honors**	46	55	30	34	68

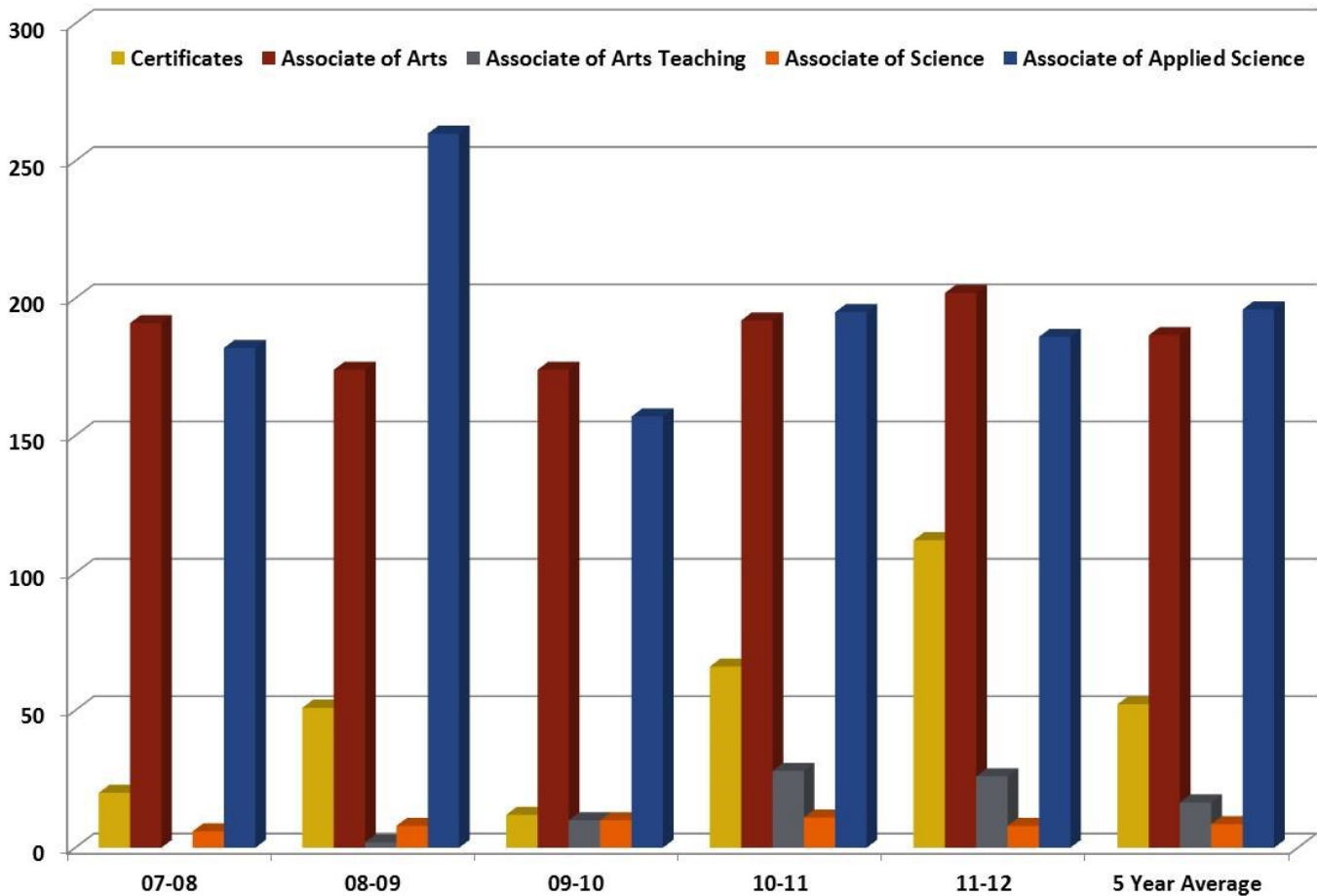
*Honors—Graduates with an overall GPA of 3.5 or better.

**Highest Honors—Graduates with an overall GPS of 3.75 or better.

DEGREES/CERTIFICATES CONFERRED

2011-2012

	07-08	08-09	09-10	10-11	11-12	5-Year
Certificates	20	51	12	66	112	52
Associate of Arts	191	174	174	192	202	187
Associate of Arts Teaching		2	10	28	26	17
Associate of Science	6	8	10	11	8	9
Associate of Applied Science	182	260	157	195	186	196
	399	495	363	492	534	457



DEGREES/CERTIFICATES CONFERRED

2011-2012

Program	
Accounting Certificate	8
Accounting Technology	6
Administration of Justice	8
Agribusiness	2
Agriculture	6
Agritechnology	1
Applied Technology	1
Art	2
Biology	3
Business Administration	19
Business Management	6
Business Management Evening	4
Childcare & Guidance	1
Civil & Construction	4
Criminal Justice -Police Science	12
Criminal Justice/Police Science Certificate	3
Drafting Technology	1
DTEC All Options	9
Early Childhood Development Certificate	1
Early Childhood Education	19
Education - Elementary	25
Education - Middle School	5
Education - Secondary	1
Electrical Technical Certificate	1
Emergency Medical Services-Paramedic	1

DEGREES/CERTIFICATES CONFERRED

2011-2012

Program	
Environmental/Occupational Safety & Health Tech Certificate	2
Environmental/Occupational Safety & Health	3
Environmental Technology Certificate	3
Fire Science	4
Fire Science One-Year Certificate	5
Fire Science Short-Term Certificate	6
Forestry Technology	7
Green Diesel Short-term Certificate	3
General Education	126
History	1
Hospitality and Tourism Certificate	2
Industrial Technician Certificate	2
Information Systems Technology Executive	5
Information Systems Technology Medical	8
Information Systems Technology Microcomputer	4
Information Systems Technology Automated Office Certificate	9
Information Systems Technology One-Year Office Assistant Certificate	5
Journalism	2
LPN/ADN Bridge Program	22
Management and Supervision Certificate	9
Manufacturing & Industrial Systems	1
Marketing and Merchandising Certificate	9
Mass Communications	1
Math	3
Medical Lab Technology	8

DEGREES/CERTIFICATES CONFERRED

2011-2012

Program	
Microcomputer Support Technology Certificate	9
Music	3
Network Administration	11
Nursing	43
Occupational Safety & Health Certificate	3
Paraprofessional Educator	1
Power Plant	2
Pre-Engineering	3
Pre-Law	5
Pre-Medicine	2
Pre-Pharmacy	1
Pre-Physical Therapy Assistant One-Year Certificate	7
Pre-Sports Medicine	4
Psychology	10
Sales Certificate	8
Social Work	2
Sociology	4
Surgical Technologist Certificate	12
Surveying Certificate	5
Total	534

CONTACT INFORMATION

Poplar Bluff Campus
2080 Three Rivers Blvd
Poplar Bluff, MO 63901
573-840-9600 877-879-8722

Center at Dexter
515 West Market
Dexter, MO 63841
573-614-1081

Center at Kennett
901C South ByPass
Kennett, MO 63857
573-888-6381

Center at Malden
2203 Narvel Felts BLVD
Malden, MO 63863
573-276-3529

Center at Portageville
147 Highway T
Portageville, MO 63873
573-379-5609

Center at Sikeston
103 Kathleen Street
Sikeston, MO 63801
573-472-5223

Cape Girardeau Partnership
For Higher Education
1080 S. Silver Springs Road
Cape Girardeau, MO 63703
573-332-0516

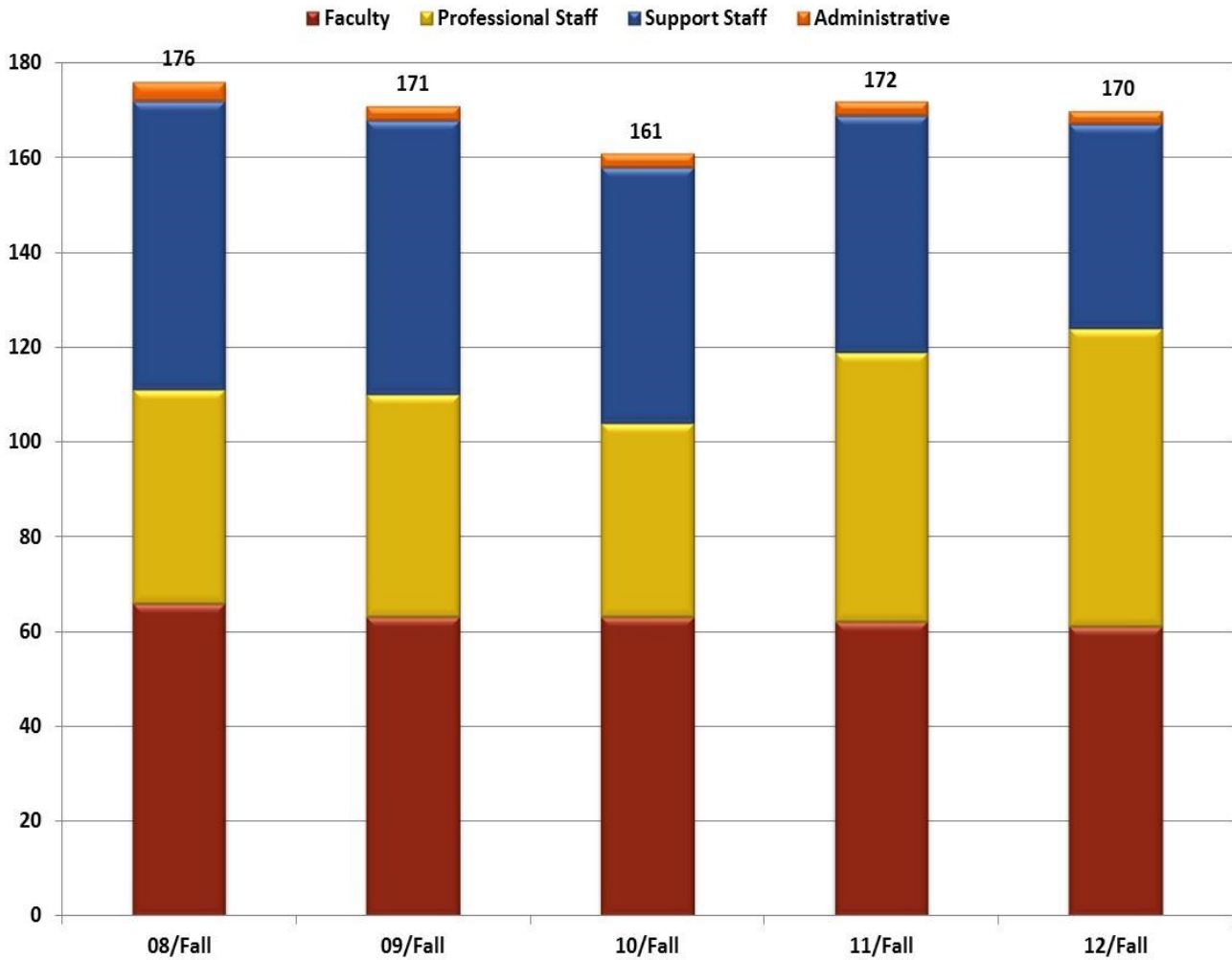
Center at Doniphan
303 Spring Street
Doniphan, MO 63966
573-996-2915

Center at Piedmont
Route 4 Box 1004
Piedmont, MO 63957
573-223-4524

Center at Van Buren
202 W-College
Doniphan, MO 63966
573-996-2915

HUMAN RESOURCES

FULL-TIME EMPLOYEES

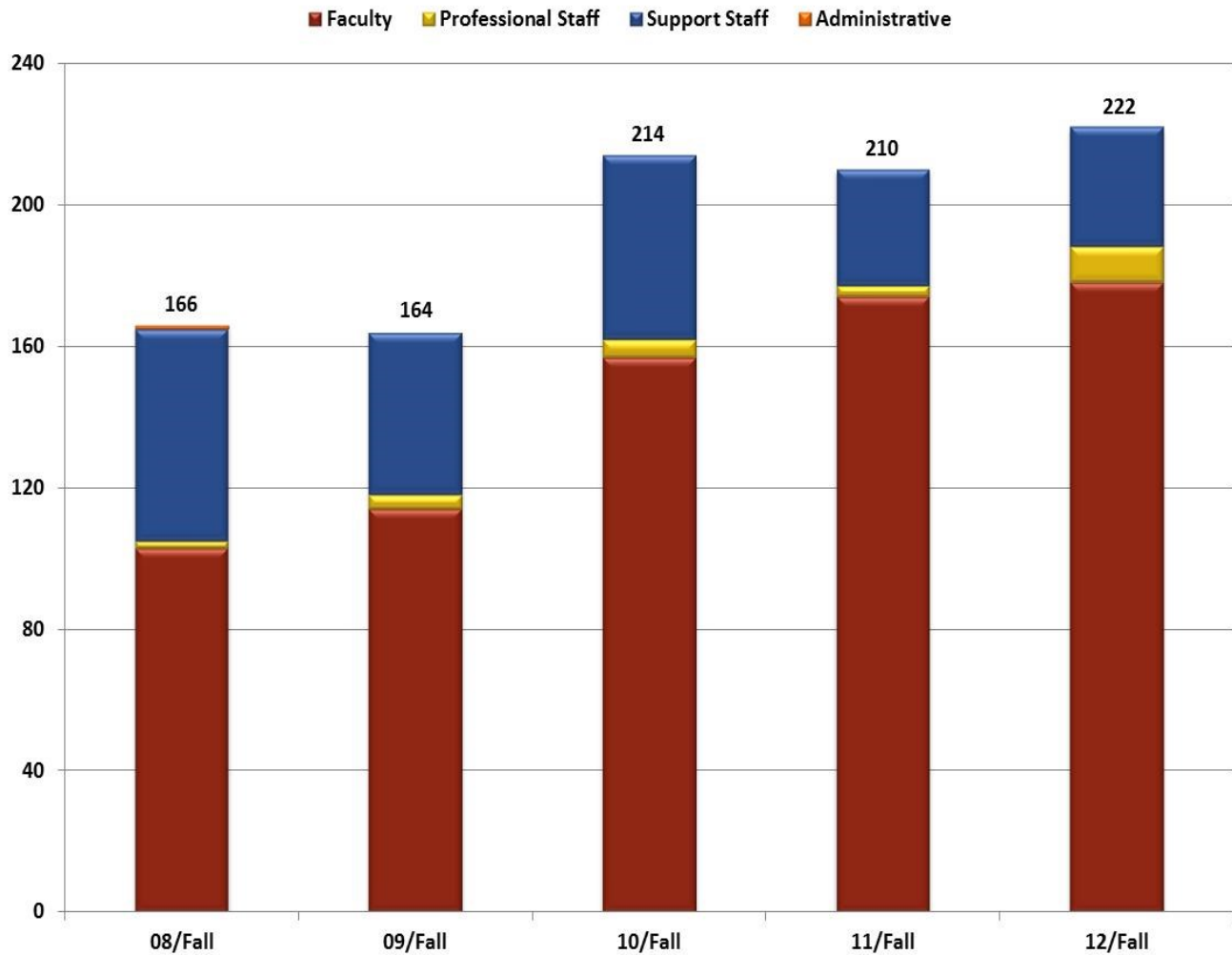


*As of September 30

Year	Faculty	Professional Staff	Support Staff	Administrative	Total Headcount
08/Fall	66	45	61	4	176
09/Fall	63	47	58	3	171
10/Fall	63	41	54	3	161
11/Fall	62	57	50	3	172
12/Fall	61	63	43	3	170

HUMAN RESOURCES

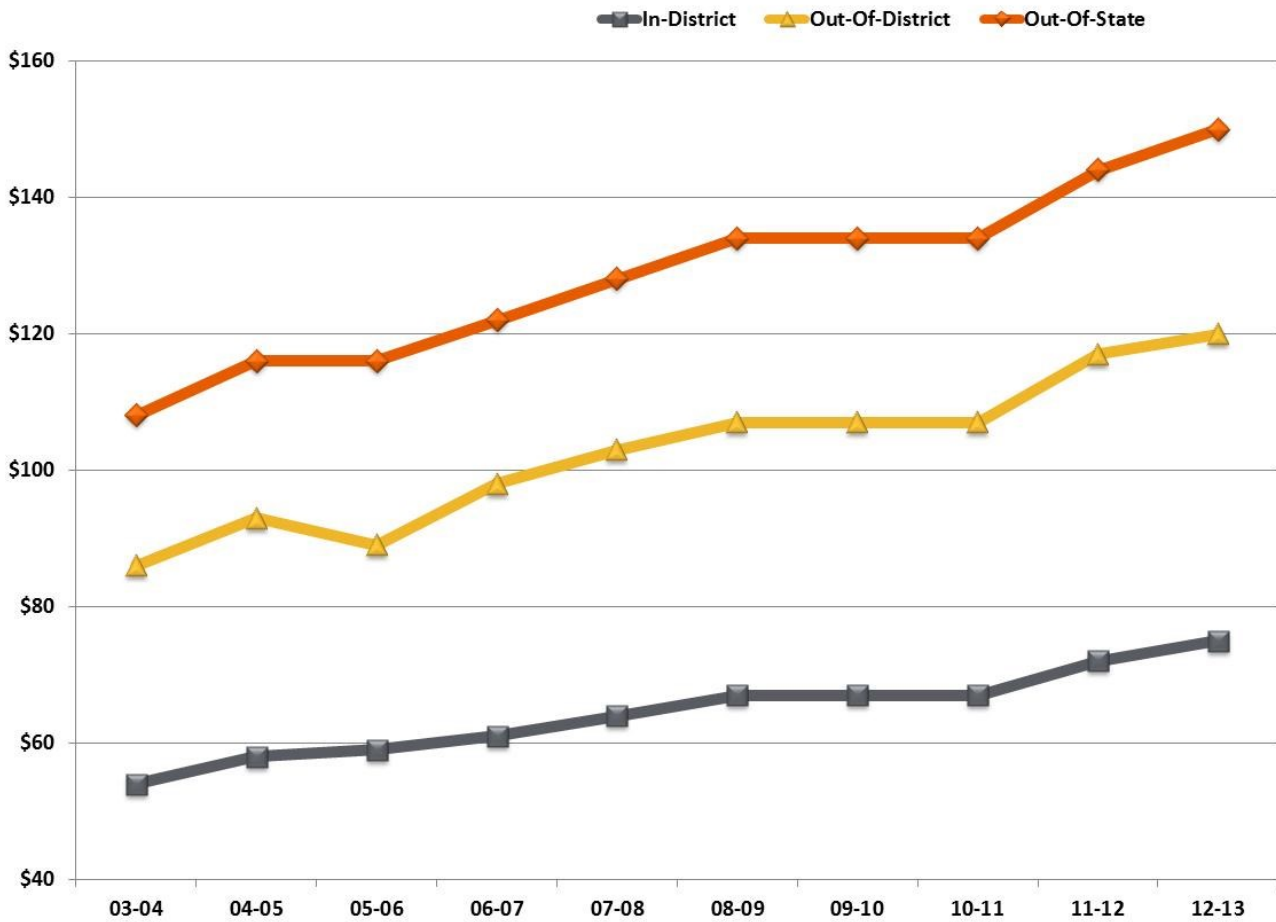
PART-TIME EMPLOYEES



*As of September 30

Year	Faculty	Professional Staff	Support Staff	Administrative	Total Headcount
08/Fall	103	2	60	1	166
09/Fall	114	4	46	0	164
10/Fall	157	5	52	0	214
11/Fall	174	3	33	0	210
12/Fall	178	10	34	0	222

TUITION COMPARISON



	03-04	04-05	05-06	06-07	07-08	08-09	09-10	10-11	11-12	12-13
In-District	\$54	\$58	\$59	\$61	\$64	\$67	\$67	\$67	\$72	\$75
Out-of-District	\$86	\$93	\$89	\$98	\$103	\$107	\$107	\$107	\$117	\$120
Out-of-State	\$108	\$116	\$116	\$122	\$128	\$134	\$134	\$134	\$144	\$150

In-District Counties

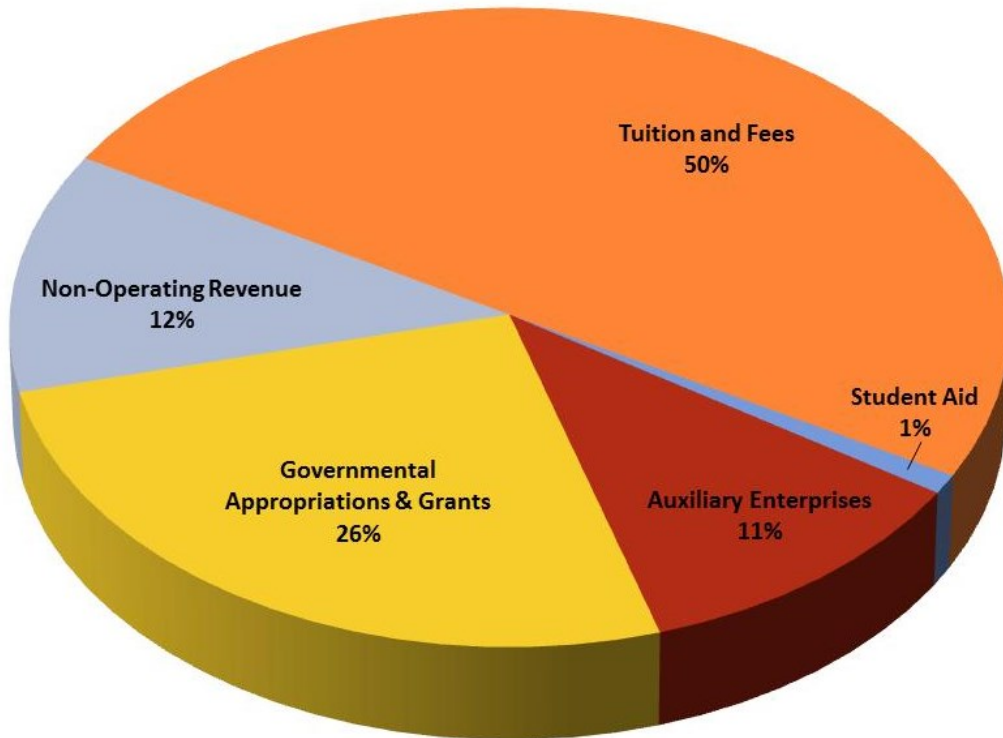
Butler
Carter
Ripley
Wayne

Out-of-District Counties

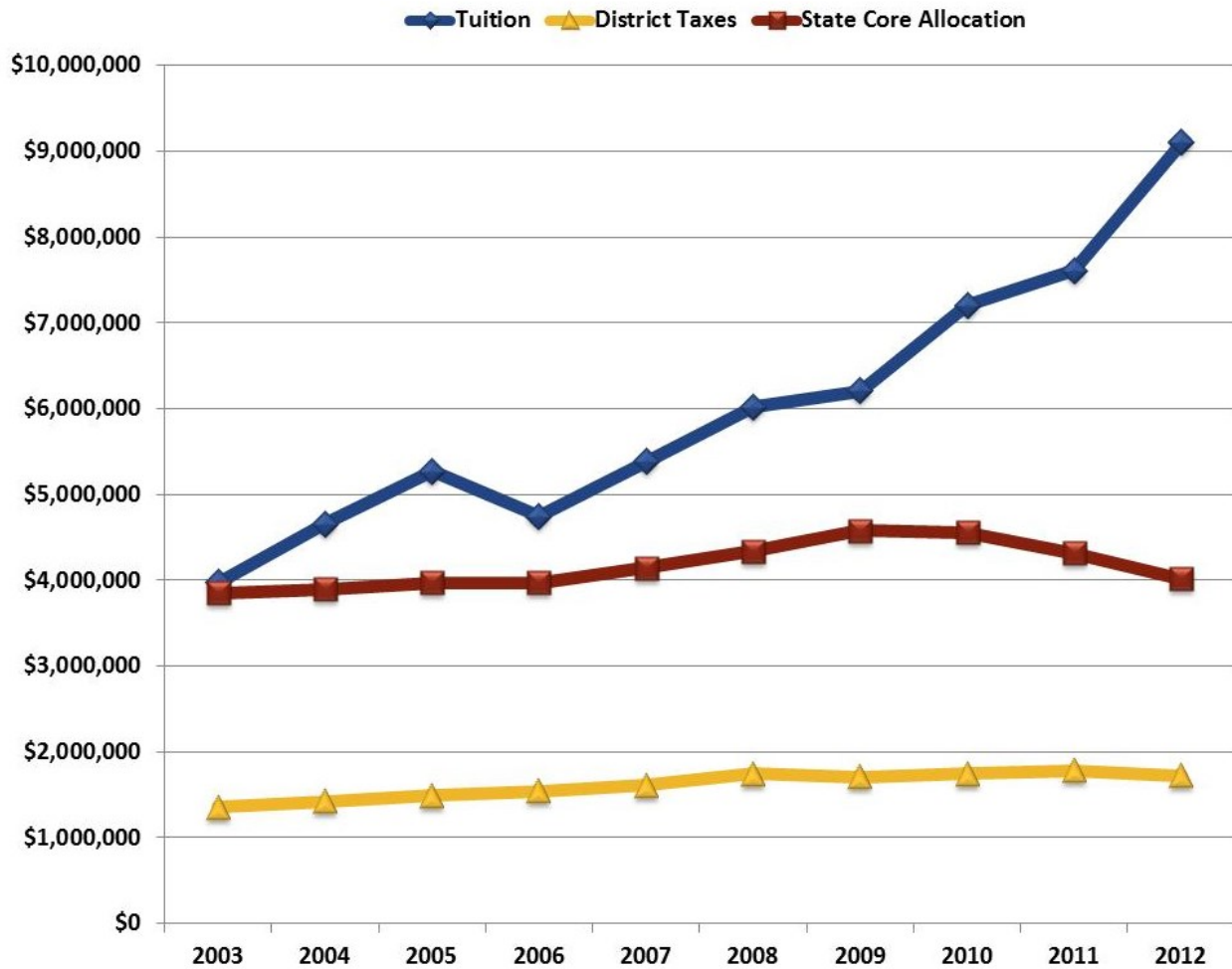
All of Missouri Counties

Clay and Randolph Counties in
Arkansas

2013 ESTIMATED REVENUE



REVENUE COMPARISON



	2003	2004	2005	2006	2007
Tuition	\$3,973,962	\$4,657,629	\$5,265,464	\$4,747,277	\$5,377,756
State Core Allocation	\$3,849,349	\$3,895,341	\$3,971,293	\$3,971,293	\$4,144,078
District Taxes	\$1,357,797	\$1,426,225	\$1,491,083	\$1,544,837	\$1,606,914

	2008	2009	2010	2011	2012
Tuition	\$6,021,377	\$6,209,088	\$7,201,891	\$7,604,427	\$9,099,810
State Core Allocation	\$4,341,464	\$4,577,321	\$4,557,322	\$4,320,335	\$4,017,912
District Taxes	\$1,744,074	\$1,709,498	\$1,746,246	\$1,781,990	\$1,720,000

PERFORMANCE FUNDING

2012 KEY PERFORMANCE INDICATORS

	2005-2007 Average	2006-2008 Average	Benchmark	Result
3 year Graduation Transfer Rate	32.12%	31.91%	41.87%	Did Not Meet Target or Benchmark
Math Developmental Success	63.03%	63.48%	69.75%	Met Performance Target
English Developmental Success	72.43%	67.66%	74.39%	Did Not Meet Target or Benchmark
Licensure/Certification Exam	83.99%	87.14%	90.00%	Met Performance Target
Responsibility and Efficiency	990.06 hr per \$100k	1067.64 hr per \$100k	N/A	Met Performance Target

The Coordinating Board for Higher Education (CBHE) approved a new Performance Funding Model in April 2012. Performance funding is to be applied to a portion of new appropriations from the state and not applied to existing base appropriations. Each institution will use five performance indicators. Rates are calculated as a three-year rolling average.

3 year Graduation Transfer Rate	The percentage of first-time, full-time entering students who successfully complete a certificate or degree of at least one year or longer, or successfully transfer to a four-year institution.
Math Developmental Success	The percentage of developmental students who successfully complete their last developmental Math course, who then successfully complete their first college-level Math course.
English Developmental Success	The percentage of developmental students who successfully complete their last developmental English course, who then successfully complete their first college-level English course.
Licensure/Certification Exam	The percentage of career/technical graduates who pass their required licensure/certification examination.
Responsibility and Efficiency	The ratio of credit hours earned at an institution per \$100,000 of state appropriations and local tax. Success is an increase in this ratio.

THREE RIVERS COLLEGE **FACTBOOK**

2080 Three Rivers BLVD
Poplar Bluff, Missouri 63901
877-879-8722

Melanie Hamann
Assistant System Administrator/
Institutional Researcher
573-840-9767
mhamann@trcc.edu